



SUPERB 1-BEDROOM FLAT - CLOSE TO MONACO

1.700 €/month



DESCRIPTIVE :

Superb 1-BEDROOM apartment ideally located on the heights of Monaco, in a new residence just completed. The apartment benefits from beautiful volumes, a large terrace and a very nice view on the greenery, the city and the sea.  
The apartment of 47.06SQ.M consists of: an entrance hall, a living room with an open semi-equipped kitchen, a bedroom, a shower room and many storage spaces and a beautiful terrace of about 17SQ.M.  
The apartment is rented with a parking lot on the same floor as the apartment and a cellar.  
The residence has a swimming pool. Access to Monaco within walking distance and by bus.  
Available starting the 1st September 2024.

Property in co-ownership Building: Yes  
No procedure in progress (articles 29-1A/29-1 law 65-557, L.615-6 of the CCH)  
Monthly co-ownership charges: €120  
Security deposit: 1 month of rental  
Diagnostics :  
Energy Consumption: A - 42Kwh/m2/year  
GHG emissions: A - 1KgCO2/m2/year  
Information on the risks to which this property is exposed is available on the "Géorisques" website: <http://georisques.gouv.fr>

REF: LF263

DETAILS

	*47 m²
	17 m²
	Good condition
	1
	Facing south
	Sea, Greenery view
CHARGES	120 €/mois

\*marketable surface area

This document does not form part of any offer or contract. All measurements, areas and distances are approximate. The information and plans contained herein are believed to be correct, however, their accuracy is not guaranteed. The photographs show only certain parts of the property at the time they were taken. This offer is subject to change of price or other conditions, without prior notice.



SUPERB 1-BEDROOM FLAT - CLOSE TO MONACO





SUPERB 1-BEDROOM FLAT - CLOSE TO MONACO





SUPERB 1-BEDROOM FLAT - CLOSE TO MONACO





SUPERB 1-BEDROOM FLAT - CLOSE TO MONACO





SUPERB 1-BEDROOM FLAT - CLOSE TO MONACO





SUPERB 1-BEDROOM FLAT - CLOSE TO MONACO



SUN PARADISE  
BEAUSOLEIL



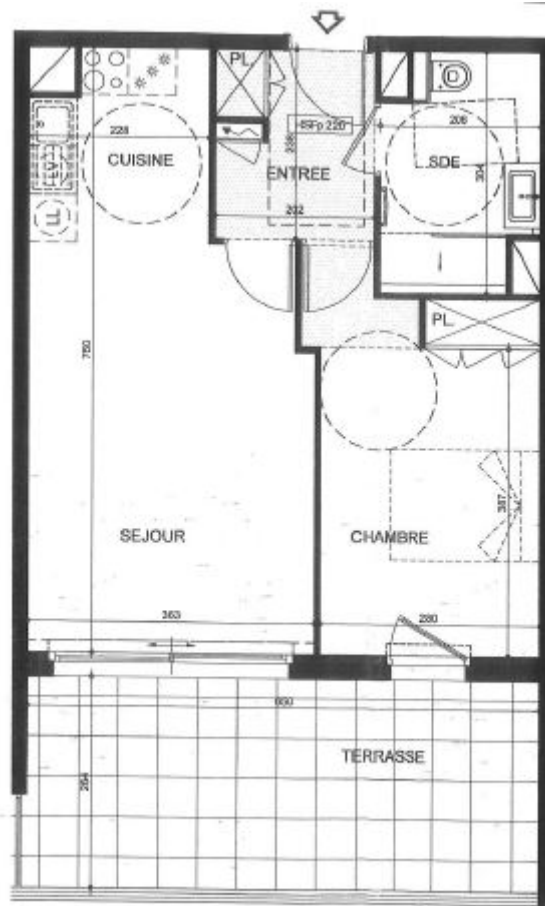
SUPERB 1-BEDROOM FLAT - CLOSE TO MONACO







SUPERB 1-BEDROOM FLAT - CLOSE TO MONACO





SUPERB 1-BEDROOM FLAT - CLOSE TO MONACO

<p><b>Consommation énergétique</b> (en énergie primaire) <b>pour le chauffage, la production d'eau chaude sanitaire et le refroidissement, déduction faite de la production d'électricité à demeure</b></p>	<p><b>Emission des gaz à effet de serre (GES) pour le chauffage, la production d'eau chaude sanitaire et le refroidissement</b></p>
<p>Consommation conventionnelle : <b>42 kWh<sub>EP</sub>/m<sup>2</sup>.an</b></p>	<p>Estimation des émissions : <b>1 kg éqCO<sub>2</sub>/m<sup>2</sup>.an</b></p>
<p><i>Logement économe</i></p> <p>≤ 50 A</p> <p>51 à 80 B</p> <p>91 à 150 C</p> <p>151 à 230 D</p> <p>231 à 330 E</p> <p>331 à 450 F</p> <p>&gt; 450 G</p> <p><i>Logement énergivore</i></p> <p>Logement <b>42</b> kWh<sub>EP</sub>/m<sup>2</sup>.an</p>	<p><i>Faible émission de GES</i></p> <p>≤ 5 A</p> <p>6 à 10 B</p> <p>11 à 20 C</p> <p>21 à 35 D</p> <p>36 à 55 E</p> <p>56 à 70 F</p> <p>&gt; 80 G</p> <p><i>Forte émission de GES</i></p> <p>Logement <b>1</b> kg<sub>éq</sub>CO<sub>2</sub>/m<sup>2</sup>.an</p>