



RARE : PENTHOUSE SEA VIEW AND MONACO

Price on request



DESCRIPTIVE :

A magnificent PENTHOUSE located a few steps from the Monegasque border, the Villa is a former private mansion with a very beautiful architectural quality. Built in 1890 under the pencil strokes of the architect Henri Schmit, known for the modifications he made to the works of Charles Garnier, the Opera and the Casino of Monte Carlo. Proudly standing in the heart of a private park with Mediterranean accents, the splendid Belle Époque residence dominates the seafront and the Principality.

With a living area of 166 m², it comprises: entrance hall, living room with balcony of 12 m², fitted kitchen, master bedroom with bathroom, two bedrooms, bathroom, kitchenette, bathroom, shower room and toilet,

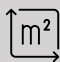





It has a roof terrace of 36M² with a breathtaking view of the sea and the Principality of Monaco.

A garden for private use, a cellar and two outside parking spaces complete this property.

Authorization already obtained to create a mansard.

REF: VF338

DETAILS

	*166 m ²
	48 m ²
	Excellent condition
	4
	Facing south east
	Sea, Monaco view

*marketable surface area

This document does not form part of any offer or contract. All measurements, areas and distances are approximate. The information and plans contained herein are believed to be correct, however, their accuracy is not guaranteed. The photographs show only certain parts of the property at the time they were taken. This offer is subject to change of price or other conditions, without prior notice.

VILLA POULIDO

ROQUEBRUNE-CAP-MARTIN



RARE : PENTHOUSE SEA VIEW AND MONACO



VILLA POULIDO

ROQUEBRUNE-CAP-MARTIN



RARE : PENTHOUSE SEA VIEW AND MONACO



VILLA POULIDO

ROQUEBRUNE-CAP-MARTIN



RARE : PENTHOUSE SEA VIEW AND MONACO



VILLA POULIDO

ROQUEBRUNE-CAP-MARTIN



RARE : PENTHOUSE SEA VIEW AND MONACO



VILLA POULIDO

ROQUEBRUNE-CAP-MARTIN



RARE : PENTHOUSE SEA VIEW AND MONACO



VILLA POULIDO

ROQUEBRUNE-CAP-MARTIN

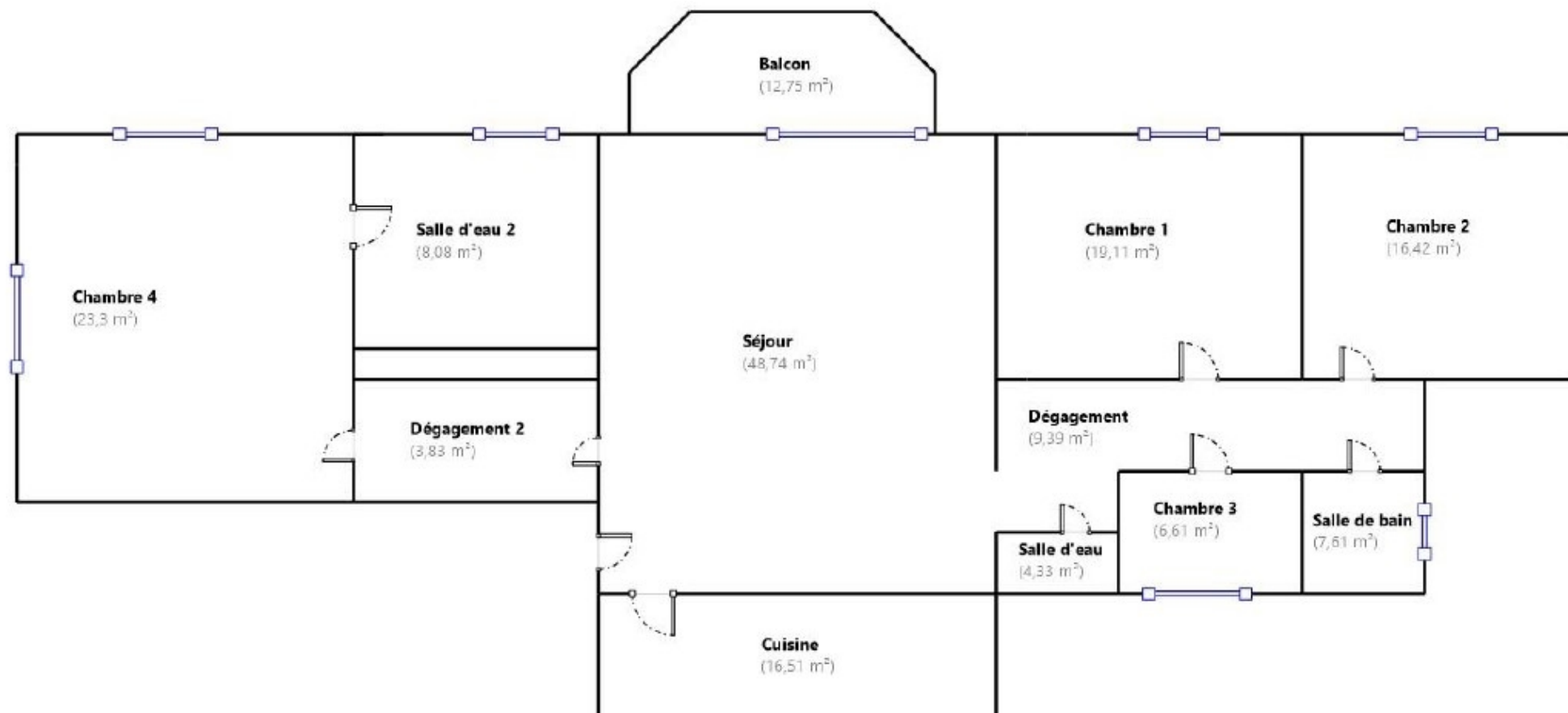


RARE : PENTHOUSE SEA VIEW AND MONACO





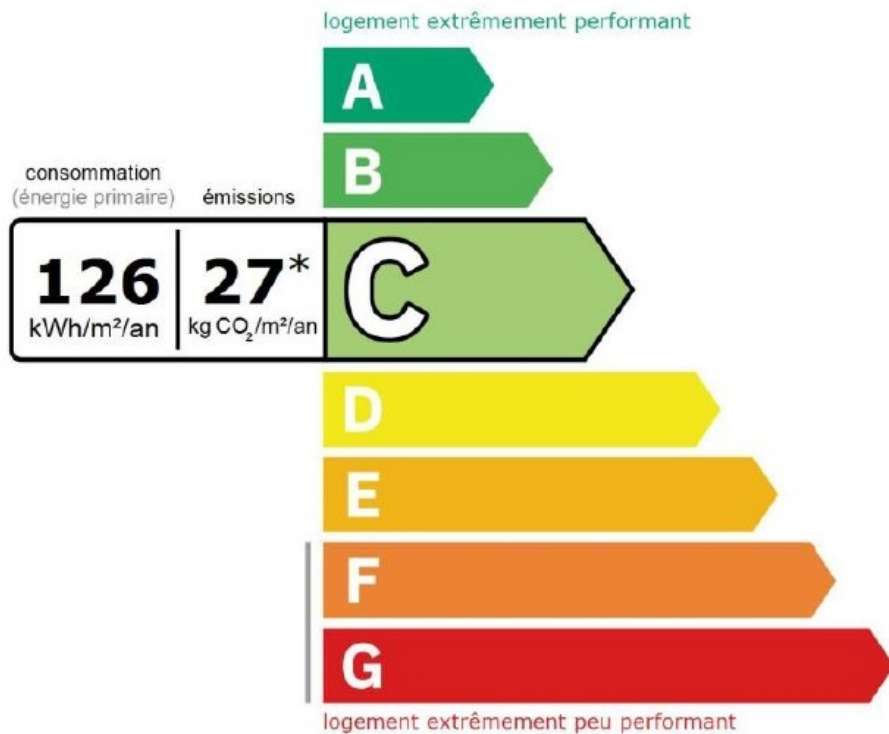
RARE : PENTHOUSE SEA VIEW AND MONACO





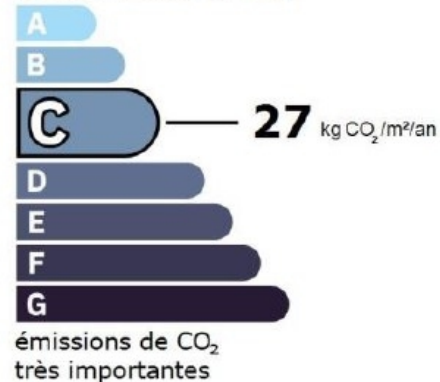
RARE : PENTHOUSE SEA VIEW AND MONACO

Performance énergétique et climatique



* Dont émissions de gaz à effet de serre

peu d'émissions de CO₂



Le niveau de consommation énergétique dépend de l'isolation du logement et de la performance des équipements. Pour l'améliorer, voir pages 4 à 6

Ce logement émet 4 548 kg de CO₂ par an, soit l'équivalent de 23 563 km parcourus en voiture.

Le niveau d'émissions dépend principalement des types d'énergies utilisées (bois, électricité, gaz, fioul, etc.)