



ONE BEDROOM APARTMENT IN FONTVIEILLE

5 900 000 €



DESCRIPTIVE :

Spacious 2 ROOMS located in a luxury residence with swimming pool and panoramic sea view. Optimal sunshine and peaceful environment. 24/7 concierge service.

With a total surface area of 150 M2, it consists of: entrance hall with cupboards, living/dining room, a bedroom, bathroom, a kitchen and guest toilets.

It has a large circular terrace serving the living room, bedroom and kitchen.

A cellar and a parking complete this property.

REF: VM2250

DETAILS



*118 m²



78 m²



Original condition



1



Facing south



Partial View Sea, Gardens view

*marketable surface area

This document does not form part of any offer or contract. All measurements, areas and distances are approximate. The information and plans contained herein are believed to be correct, however, their accuracy is not guaranteed. The photographs show only certain parts of the property at the time they were taken. This offer is subject to change of price or other conditions, without prior notice.



ONE BEDROOM APARTMENT IN FONTVIEILLE





ONE BEDROOM APARTMENT IN FONTVIEILLE





ONE BEDROOM APARTMENT IN FONTVIEILLE



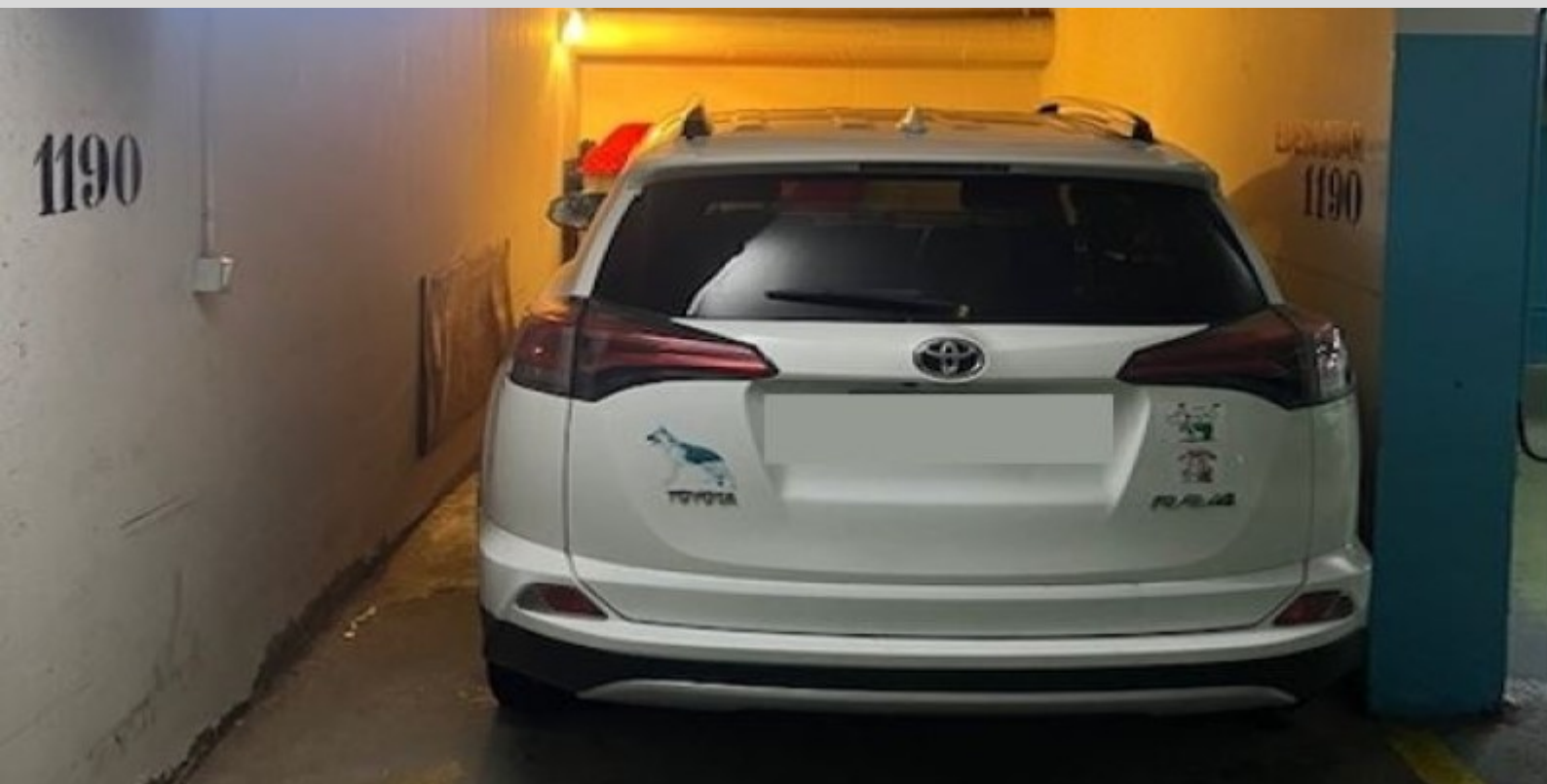


ONE BEDROOM APARTMENT IN FONTVIEILLE





ONE BEDROOM APARTMENT IN FONTVIEILLE



EDEN STAR
FONTVIEILLE

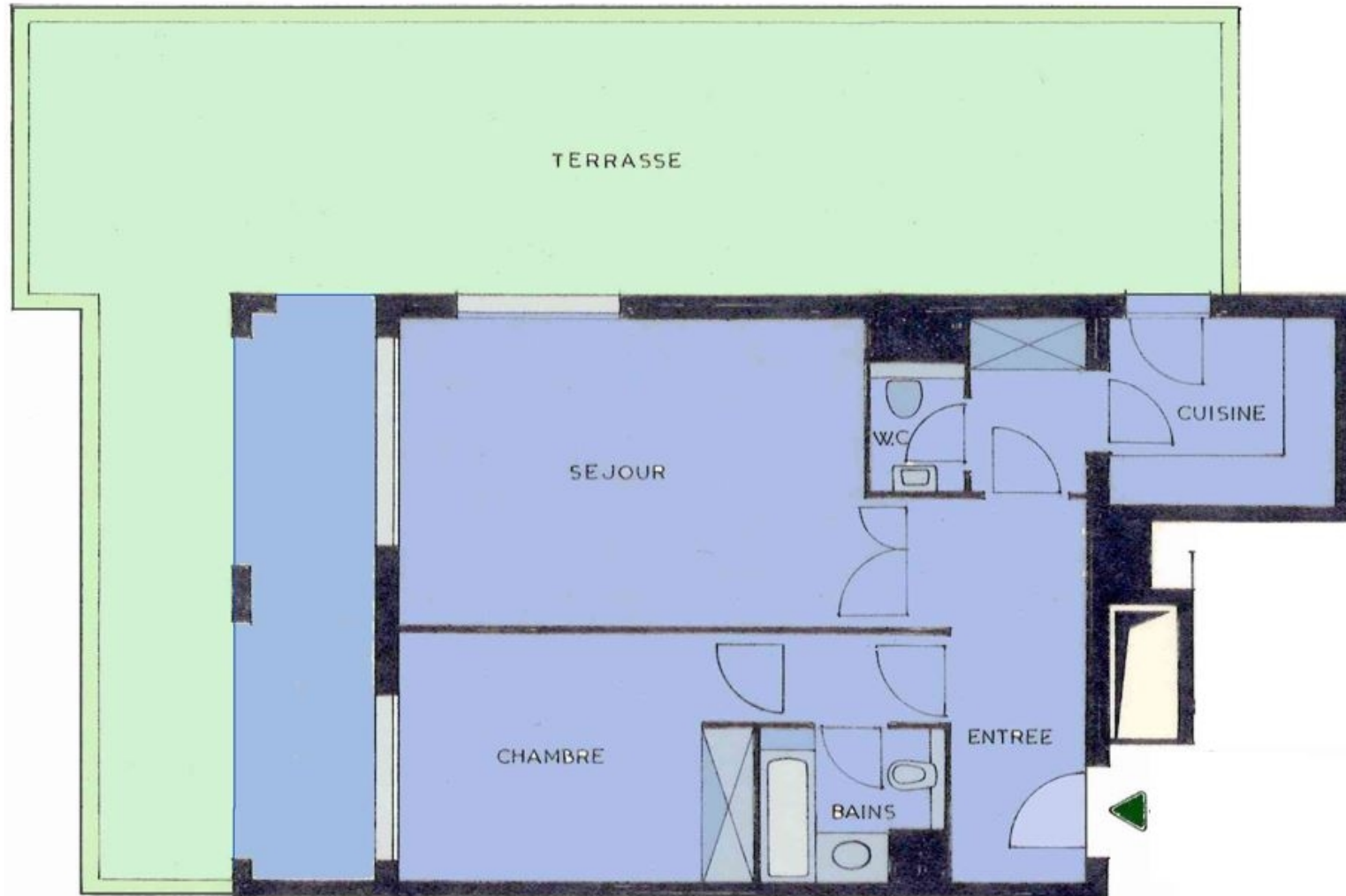


ONE BEDROOM APARTMENT IN FONTVIEILLE



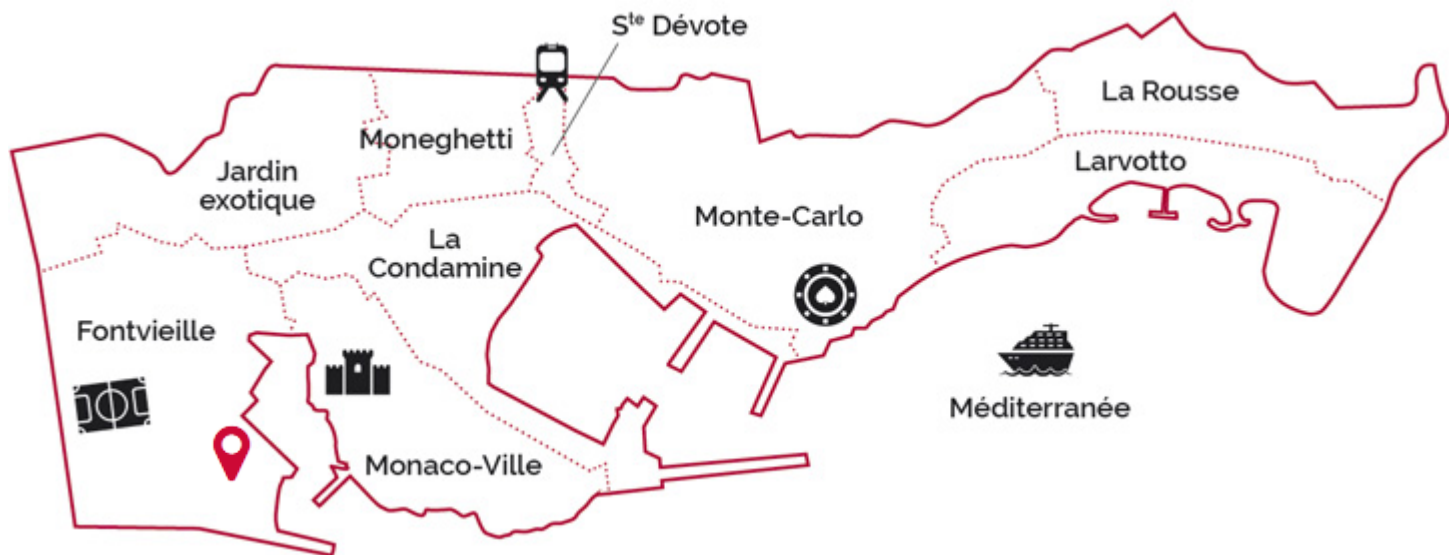


ONE BEDROOM APARTMENT IN FONTVIEILLE





ONE BEDROOM APARTMENT IN FONTVIEILLE



Legal This document does not form part of any offer or contract. All measurements, areas and distances are approximate. The information and plans contained herein are believed to be correct, however, their accuracy is not guaranteed. The photographs show only certain parts of the property at the time they were taken. This offer is subject to change of price or other conditions, without prior notice.