



RARE: PENTHOUSE IN THE HEART OF CARRE D'OR

Price on request



DESCRIPTIVE :

Unique in the heart of the Carré D'Or, this fabulous penthouse apartment has been completely renovated and decorated, with a total surface area of 418 m², including a rooftop terrace, and enjoys an uninterrupted view of the sea and Mareterra. This superb duplex is located in a luxury residence with 24-hour security and a host of luxury features.

The flat, which has been fully renovated using quality materials, comprises a double living room on the sea side, a dining room with open-plan kitchen and three bedrooms with fitted wardrobes, bathroom or shower.

Stairs lead up to the roof terrace with summer kitchen, jacuzzi and guest bedroom with shower room.

Sold with a double cellar and two parking spaces.

REF: VM637

DETAILS

	*319 m ²
	228 m ²
	Excellent condition
	4
	Facing south
	Partial View Sea view

*marketable surface area

This document does not form part of any offer or contract. All measurements, areas and distances are approximate. The information and plans contained herein are believed to be correct, however, their accuracy is not guaranteed. The photographs show only certain parts of the property at the time they were taken. This offer is subject to change of price or other conditions, without prior notice.



RARE: PENTHOUSE IN THE HEART OF CARRE D'OR





RARE: PENTHOUSE IN THE HEART OF CARRE D'OR





RARE: PENTHOUSE IN THE HEART OF CARRE D'OR



MIRABEL
MONTE-CARLO



RARE: PENTHOUSE IN THE HEART OF CARRE D'OR





RARE: PENTHOUSE IN THE HEART OF CARRE D'OR





RARE: PENTHOUSE IN THE HEART OF CARRE D'OR





RARE: PENTHOUSE IN THE HEART OF CARRE D'OR



MIRABEL
MONTE-CARLO



RARE: PENTHOUSE IN THE HEART OF CARRE D'OR



MIRABEL
MONTE-CARLO



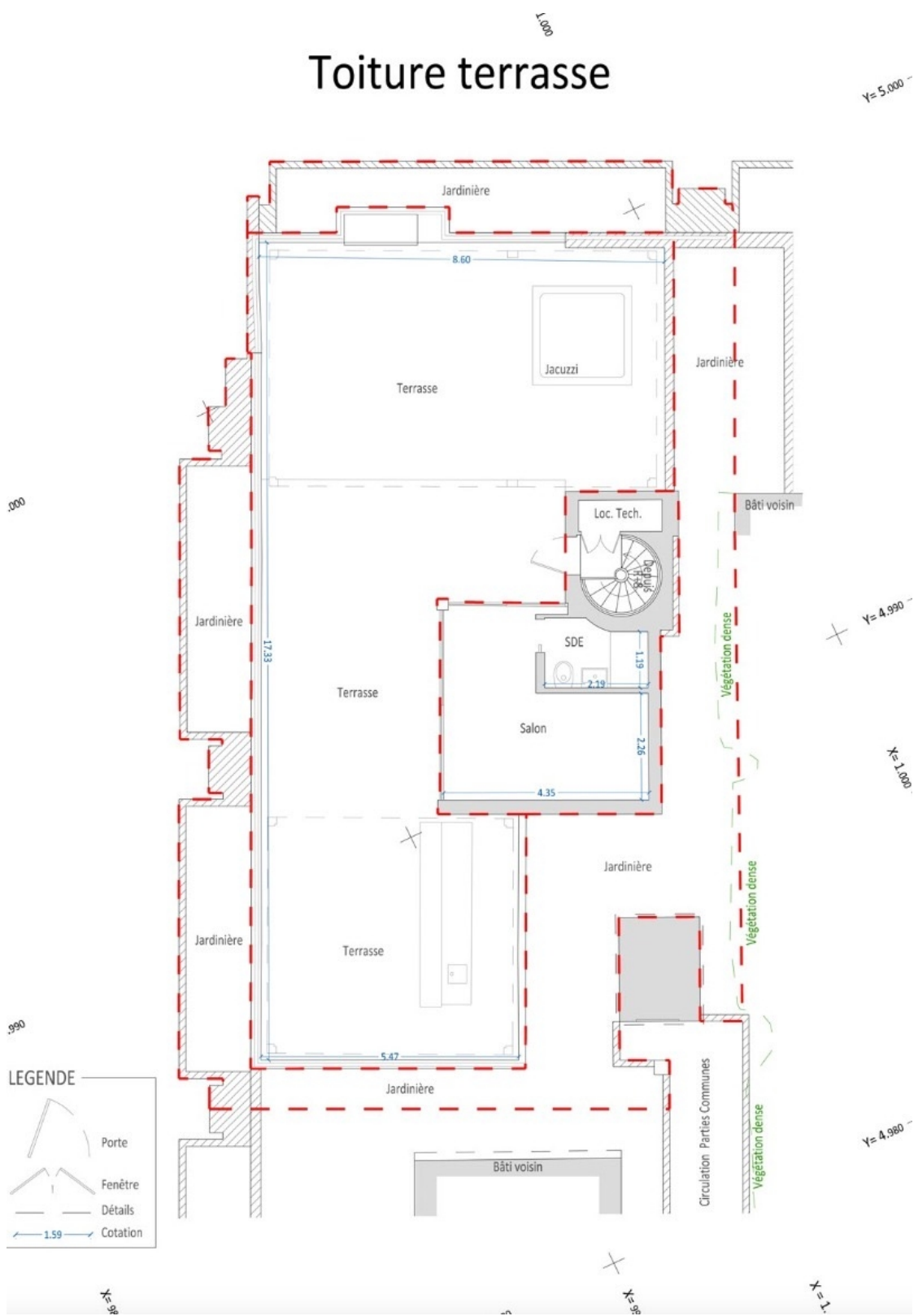
RARE: PENTHOUSE IN THE HEART OF CARRE D'OR





RARE: PENTHOUSE IN THE HEART OF CARRE D'OR

Toiture terrasse

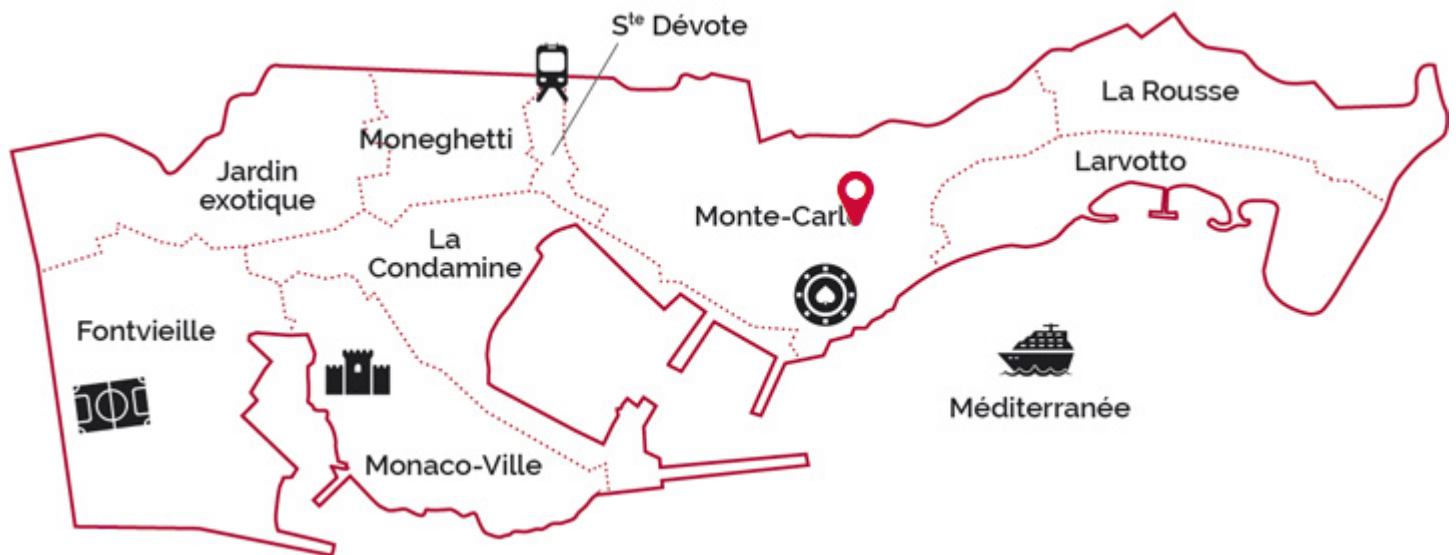


LEGENDE

- Porte
- Fenêtre
- Détails
- Cotation



RARE: PENTHOUSE IN THE HEART OF CARRE D'OR



Legal This document does not form part of any offer or contract. All measurements, areas and distances are approximate. The information and plans contained herein are believed to be correct, however, their accuracy is not guaranteed. The photographs show only certain parts of the property at the time they were taken. This offer is subject to change of price or other conditions, without prior notice.