

# LE 45G

## LA CONDAMINE



130 000 €/mese



DESCRITTIVO :

**REF: LM2405**

### INFORMAZIONI



\*1078 m<sup>2</sup>



462 m<sup>2</sup>



condizioni eccellenti



5



Vista panoramica, porto, rocca

CARICHI

8 000 €/mois

\*superficie commercializzabile

This document does not form part of any offer or contract. All measurements, areas and distances are approximate. The information and plans contained herein are believed to be correct, however, their accuracy is not guaranteed. The photographs show only certain parts of the property at the time they were taken. This offer is subject to change of price or other conditions, without prior notice.

LE 45G  
LA CONDAMINE





LE 45G  
LA CONDAMINE





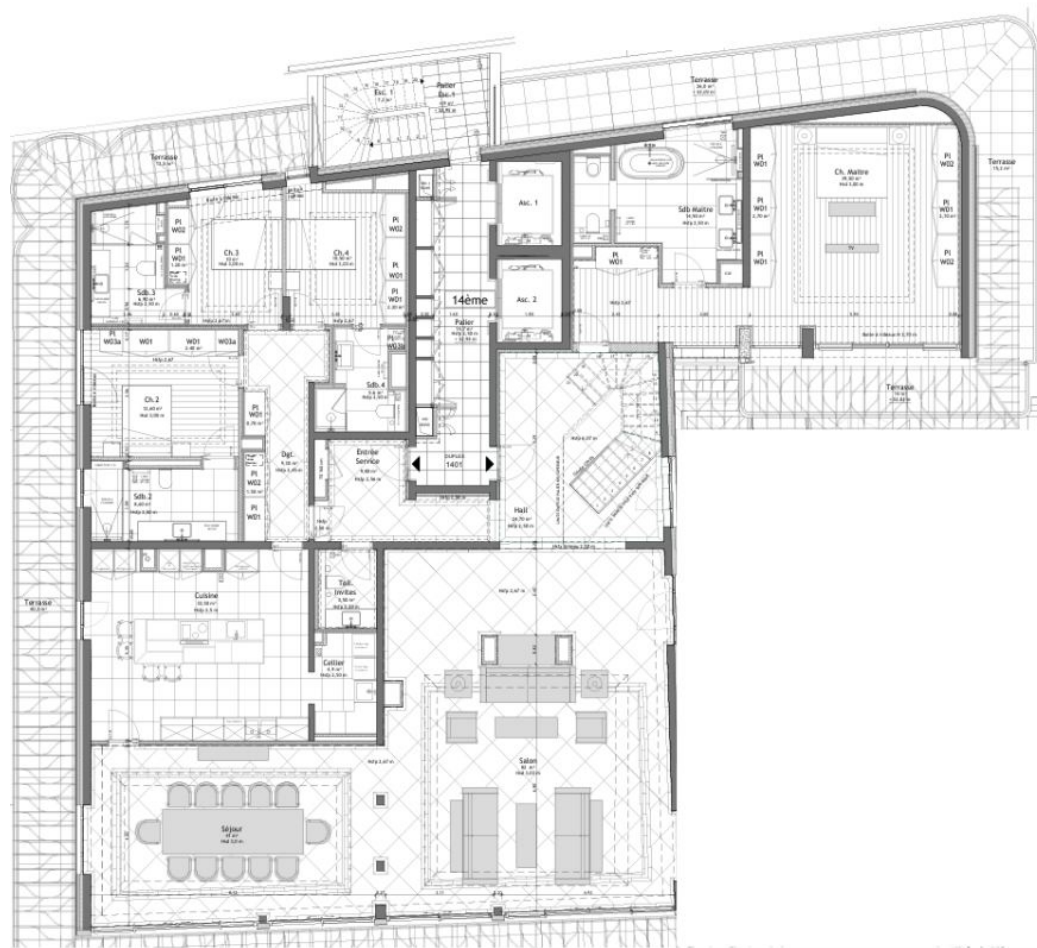
# LE 45G

## LA CONDAMINE





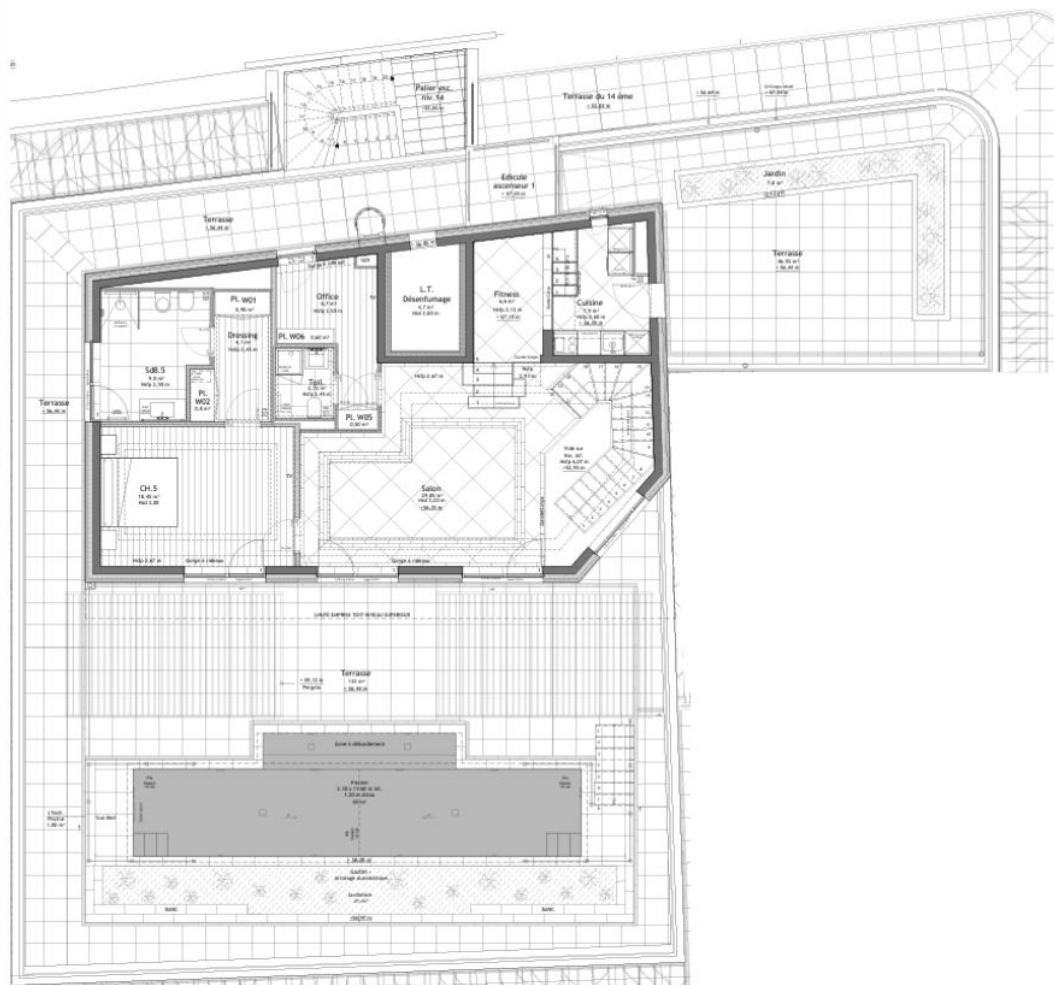
14th Floor





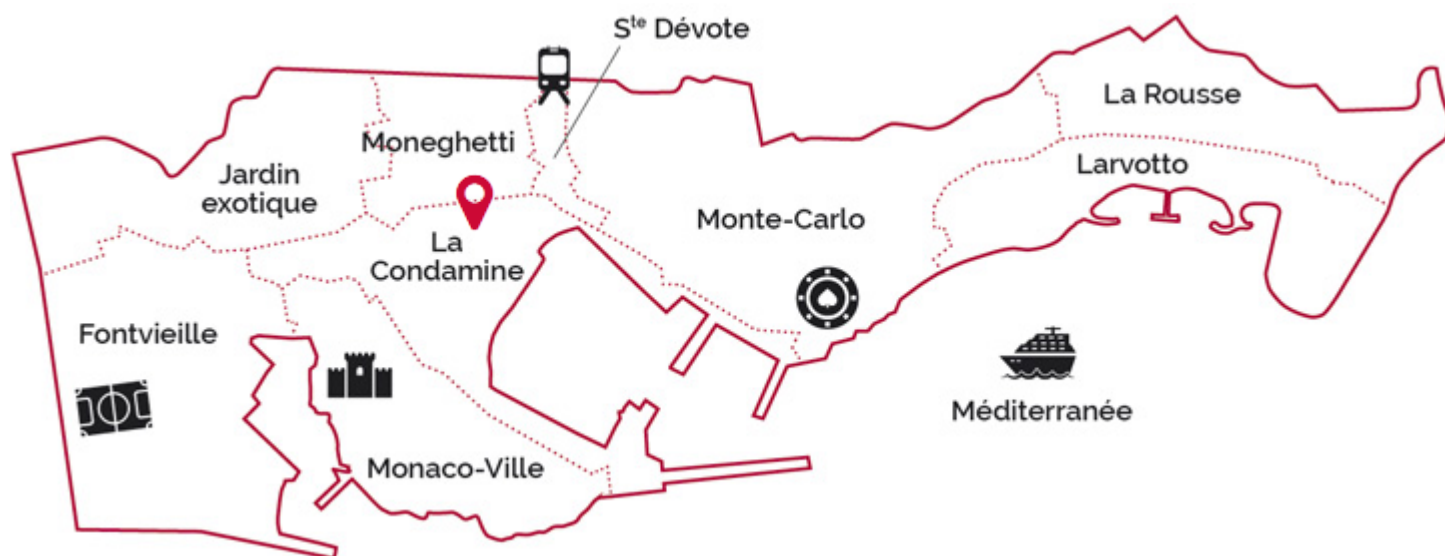


15th Floor



LE 45G

LA CONDAMINE



legal This document does not form part of any offer or contract. All measurements, areas and distances are approximate. The information and plans contained herein are believed to be correct, however, their accuracy is not guaranteed. The photographs show only certain parts of the property at the time they were taken. This offer is subject to change of price or other conditions, without prior notice.