



31 000 €/month

DESCRIPTIVE :

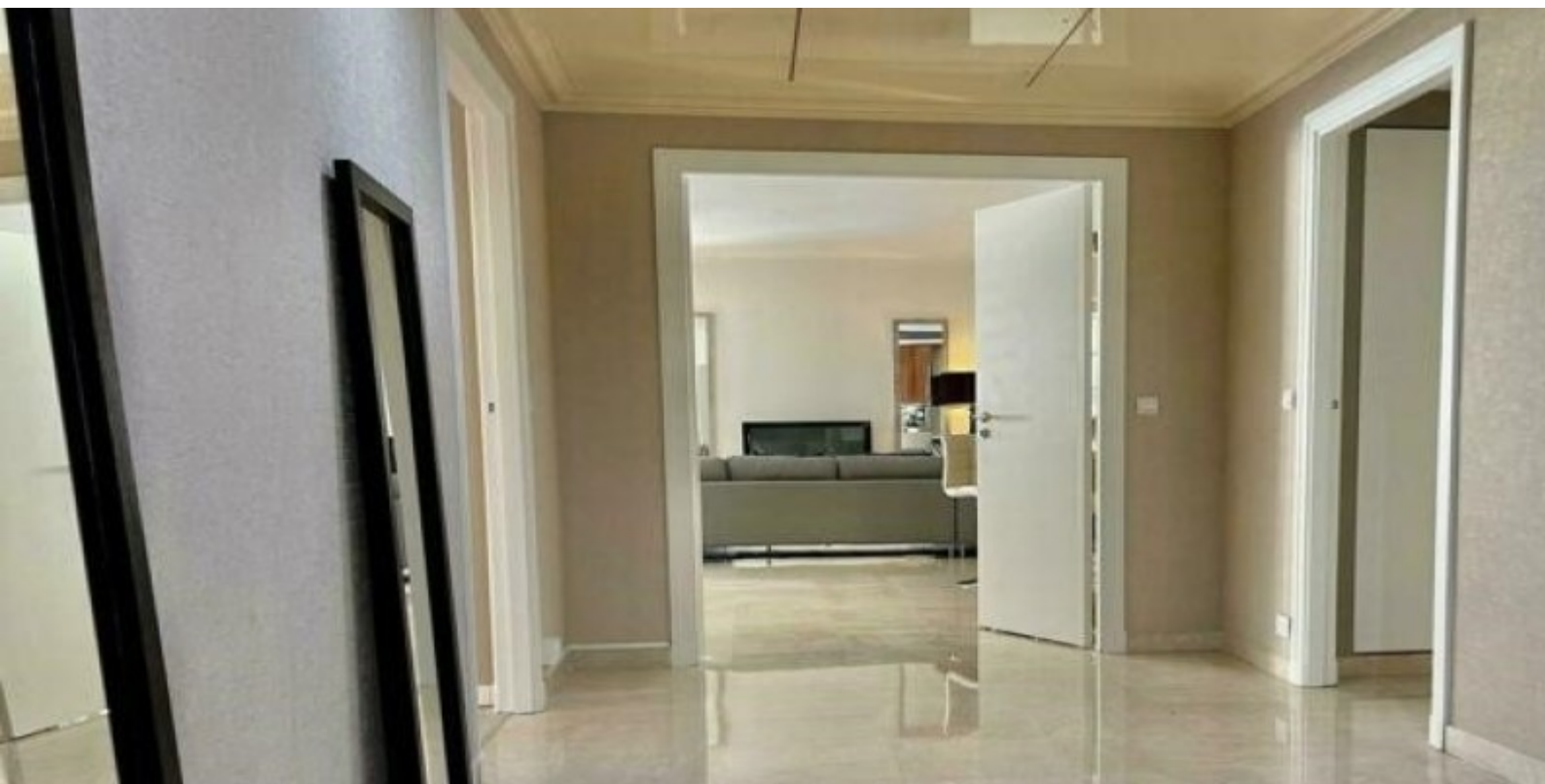
REF: LM1999

DETAILS	
	*235 m²
	45 m²
	???????????????????? ??????????????
	4
	????????????? ??? ?? ?????, ?????? view
CHARGES	1 200 €/mois

*Marketable area

This document does not form part of any offer or contract. All measurements, areas and distances are approximate. The information and plans contained herein are believed to be correct, however, their accuracy is not guaranteed. The photographs show only certain parts of the property at the time they were taken. This offer is subject to change of price or other conditions, without prior notice.



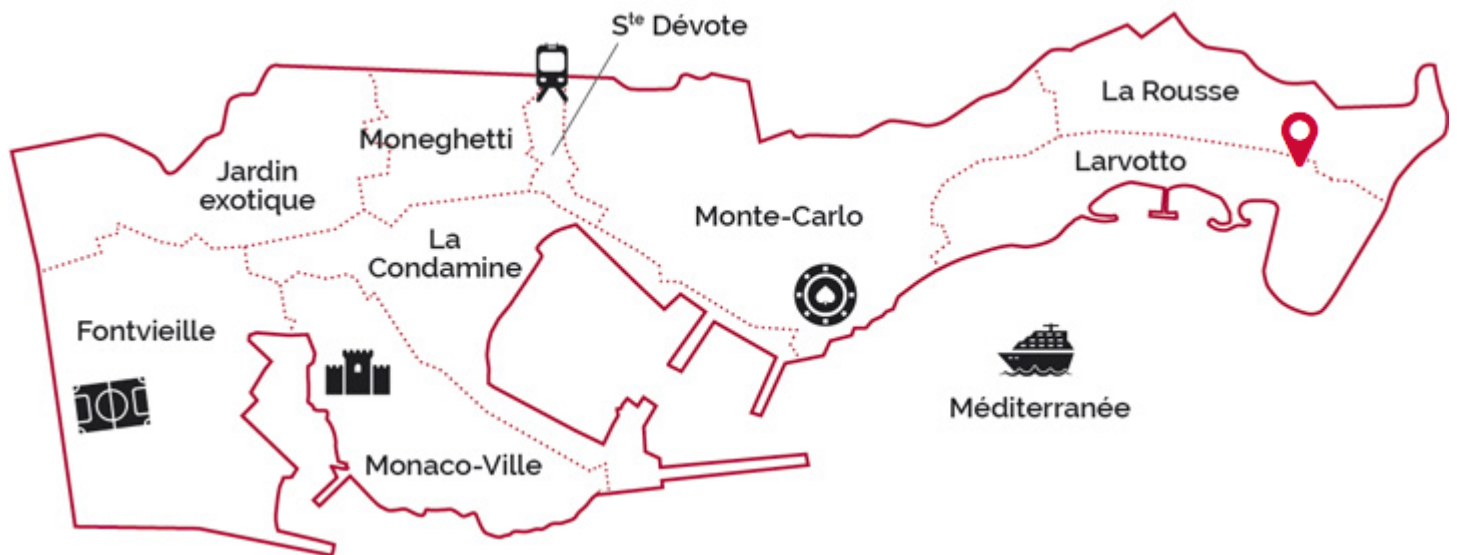












Legal This document does not form part of any offer or contract. All measurements, areas and distances are approximate. The information and plans contained herein are believed to be correct, however, their accuracy is not guaranteed. The photographs show only certain parts of the property at the time they were taken. This offer is subject to change of price or other conditions, without prior notice.