

# PARC SAINT ROMAN LA ROUSSE



5 000 €/month

DESCRIPTIVE :

REF: LM2260

DETAILS	
	*72 m²
	10 m²
	????????????????????
	1
	Facing ???????
	???? view
CHARGES	450 €/mois

\*Marketable area

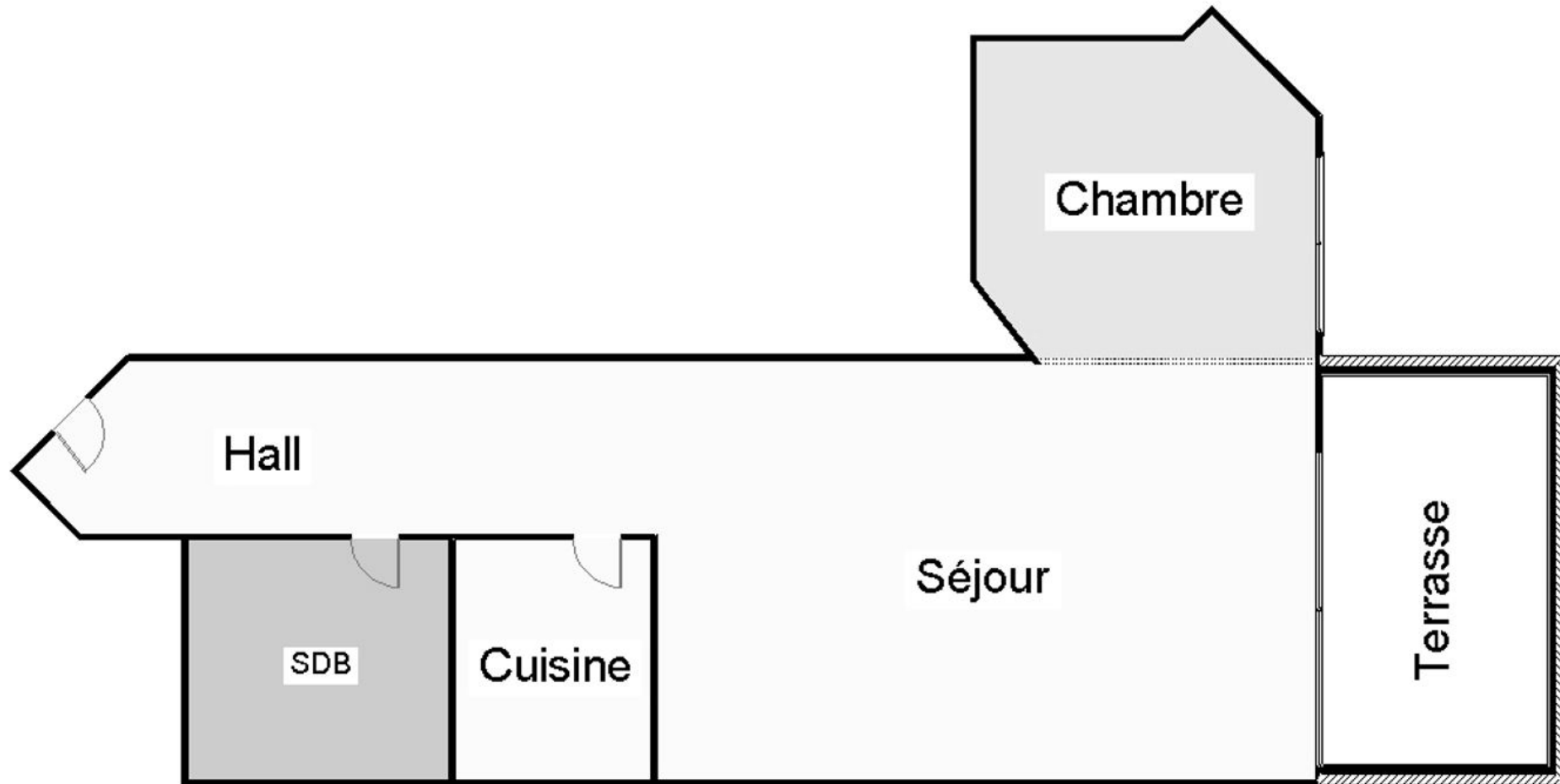
This document does not form part of any offer or contract. All measurements, areas and distances are approximate. The information and plans contained herein are believed to be correct, however, their accuracy is not guaranteed. The photographs show only certain parts of the property at the time they were taken. This offer is subject to change of price or other conditions, without prior notice.

# PARC SAINT ROMAN LA ROUSSE



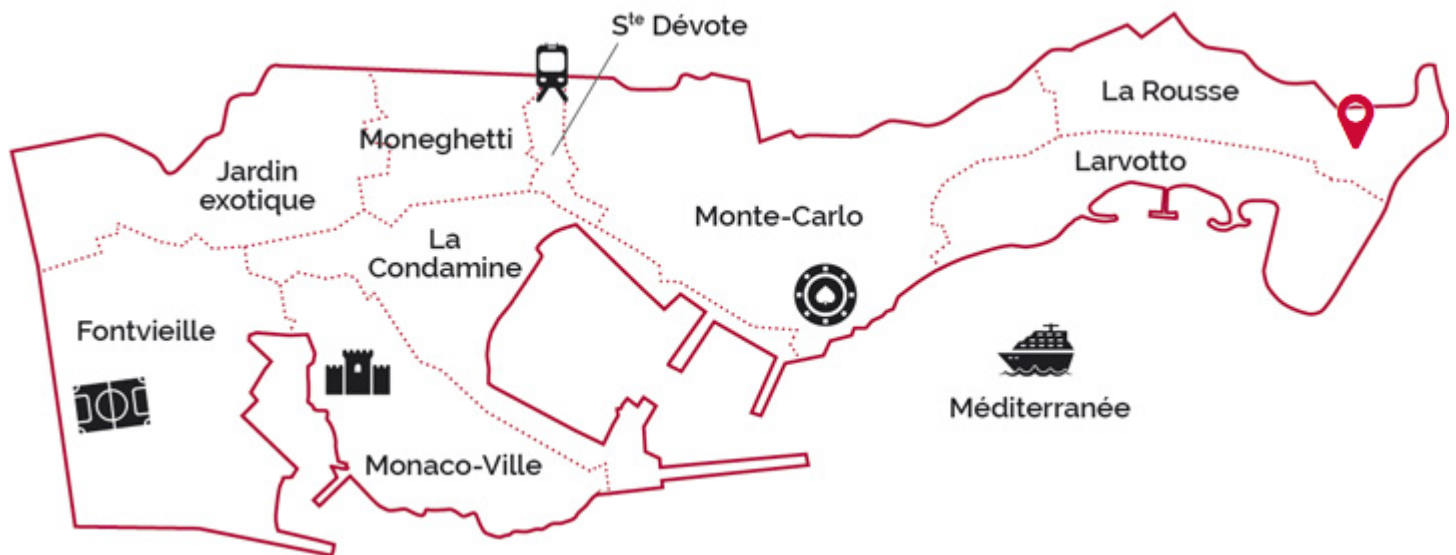






# PARC SAINT ROMAN

## LA ROUSSE



Legal This document does not form part of any offer or contract. All measurements, areas and distances are approximate. The information and plans contained herein are believed to be correct, however, their accuracy is not guaranteed. The photographs show only certain parts of the property at the time they were taken. This offer is subject to change of price or other conditions, without prior notice.