



3 500 €/month

DESCRIPTIVE :

REF: LM2336

DETAILS

	*48 m²
	12 m²
	????????????????????
	Facing ????????
	???
CHARGES	180 €/mois

\*Marketable area

This document does not form part of any offer or contract. All measurements, areas and distances are approximate. The information and plans contained herein are believed to be correct, however, their accuracy is not guaranteed. The photographs show only certain parts of the property at the time they were taken. This offer is subject to change of price or other conditions, without prior notice.

VILLA PALAZZINO  
MONTE-CARLO





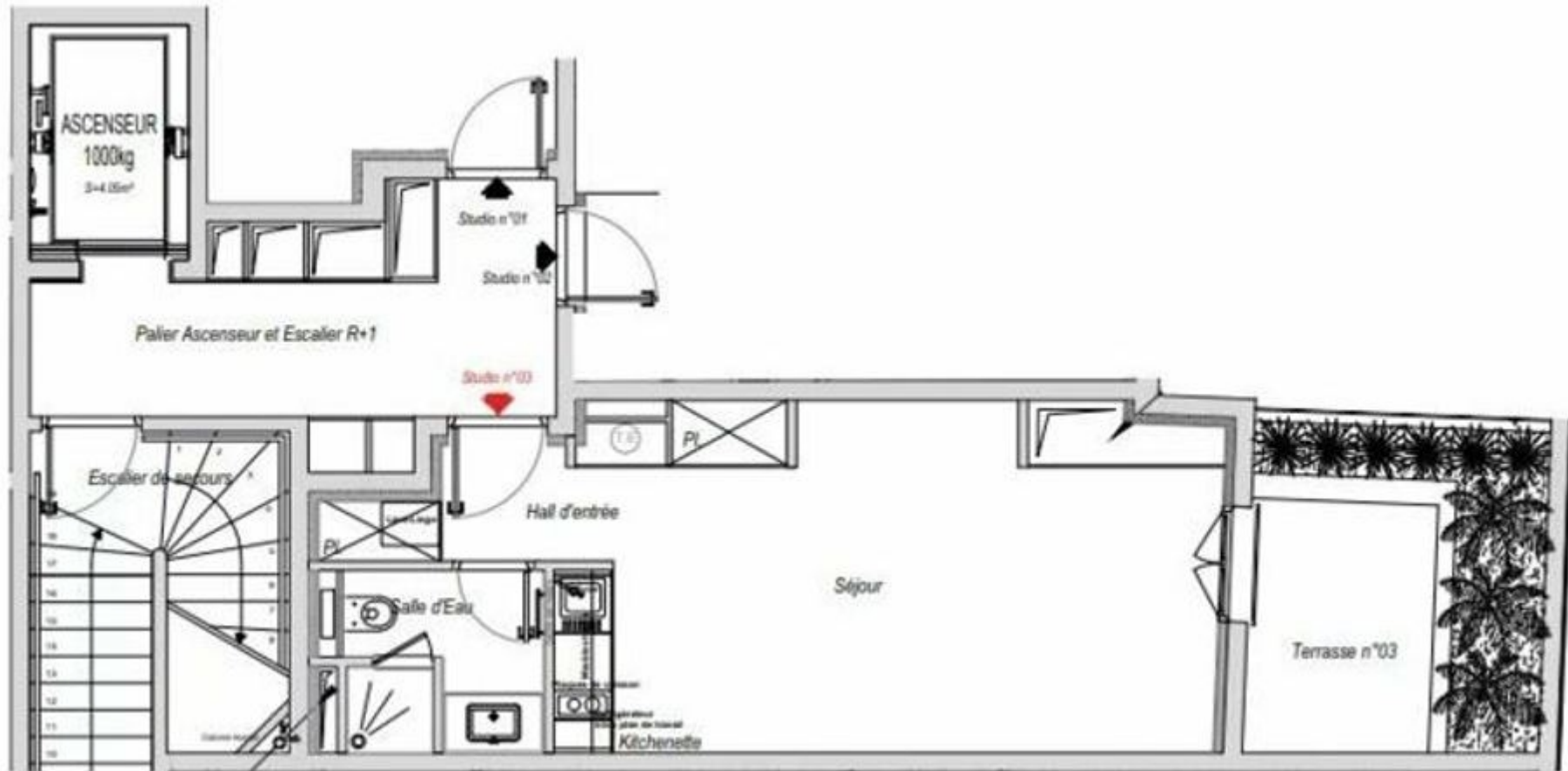
VILLA PALAZZINO  
MONTE-CARLO



VILLA PALAZZINO  
MONTE-CARLO

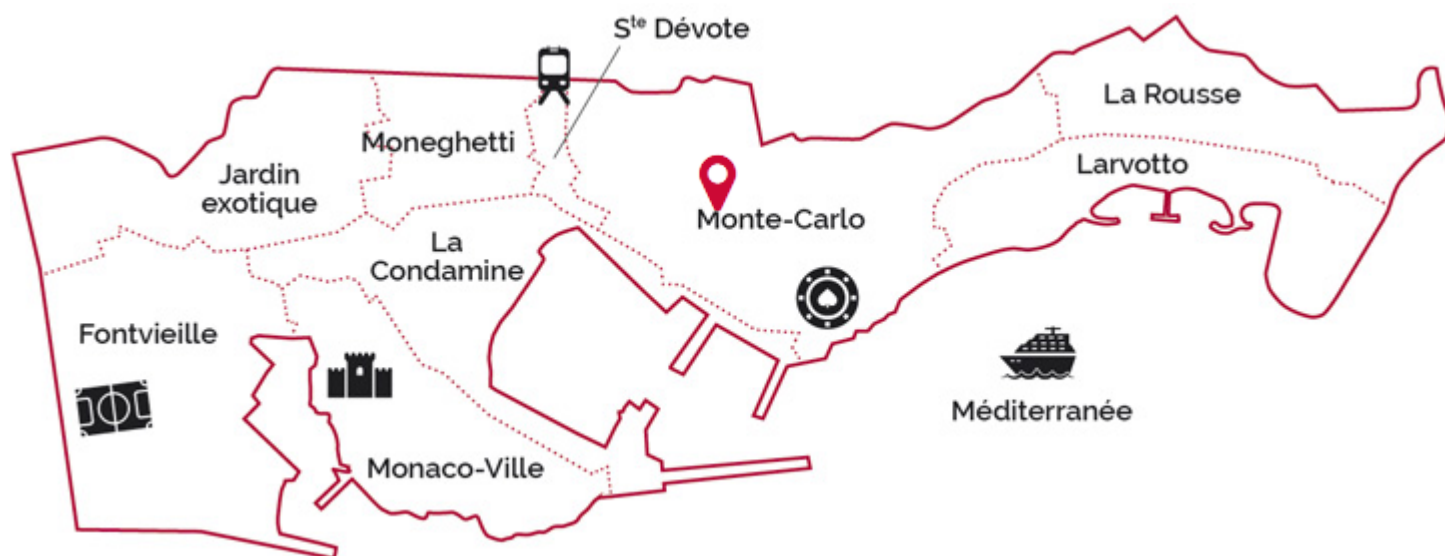






# VILLA PALAZZINO

## MONTE-CARLO



Legal This document does not form part of any offer or contract. All measurements, areas and distances are approximate. The information and plans contained herein are believed to be correct, however, their accuracy is not guaranteed. The photographs show only certain parts of the property at the time they were taken. This offer is subject to change of price or other conditions, without prior notice.