



130 000 €/month

DESCRIPTIVE :

REF: LM2405

DETAILS	
	*1078 m²
	462 m²
	????????????????????
	5
	????????????????, ?????, ???? view
CHARGES	8 000 €/mois

*Marketable area

This document does not form part of any offer or contract. All measurements, areas and distances are approximate. The information and plans contained herein are believed to be correct, however, their accuracy is not guaranteed. The photographs show only certain parts of the property at the time they were taken. This offer is subject to change of price or other conditions, without prior notice.

LE 45G
LA CONDAMINE



LE 45G
LA CONDAMINE

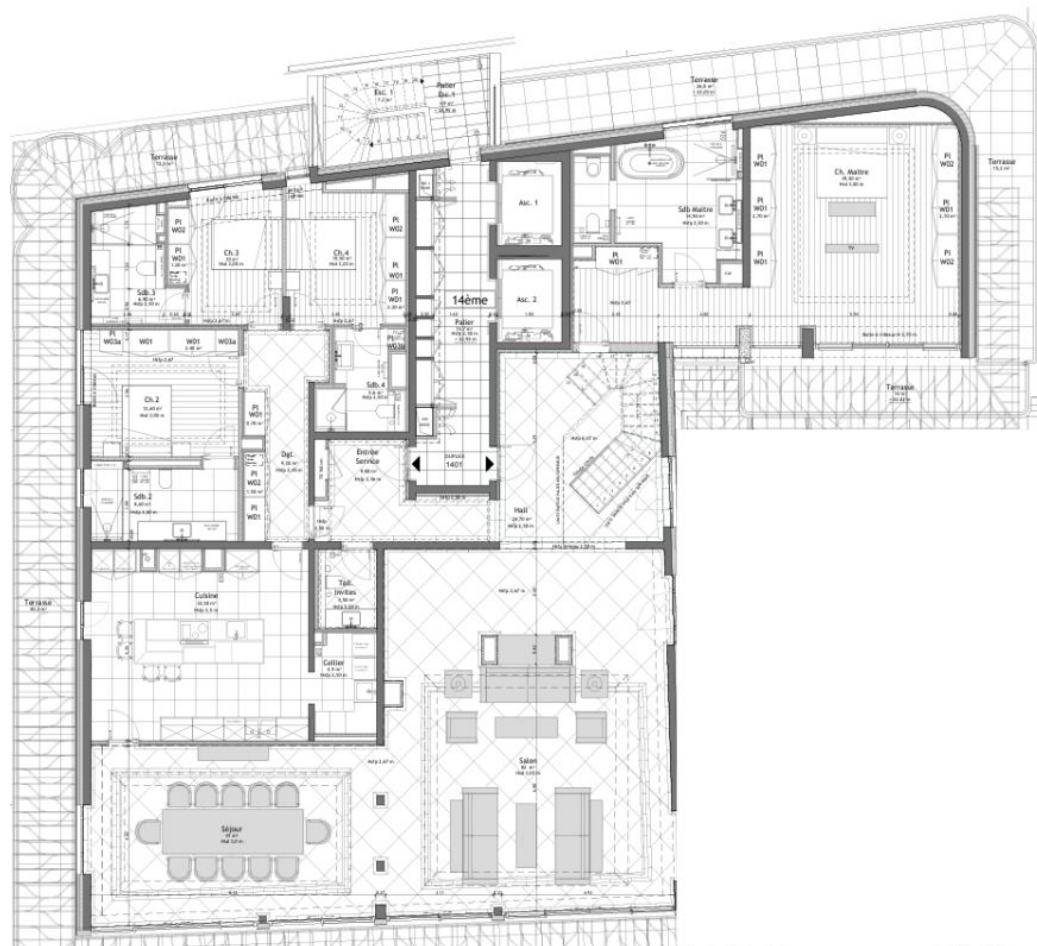


LE 45G
LA CONDAMINE



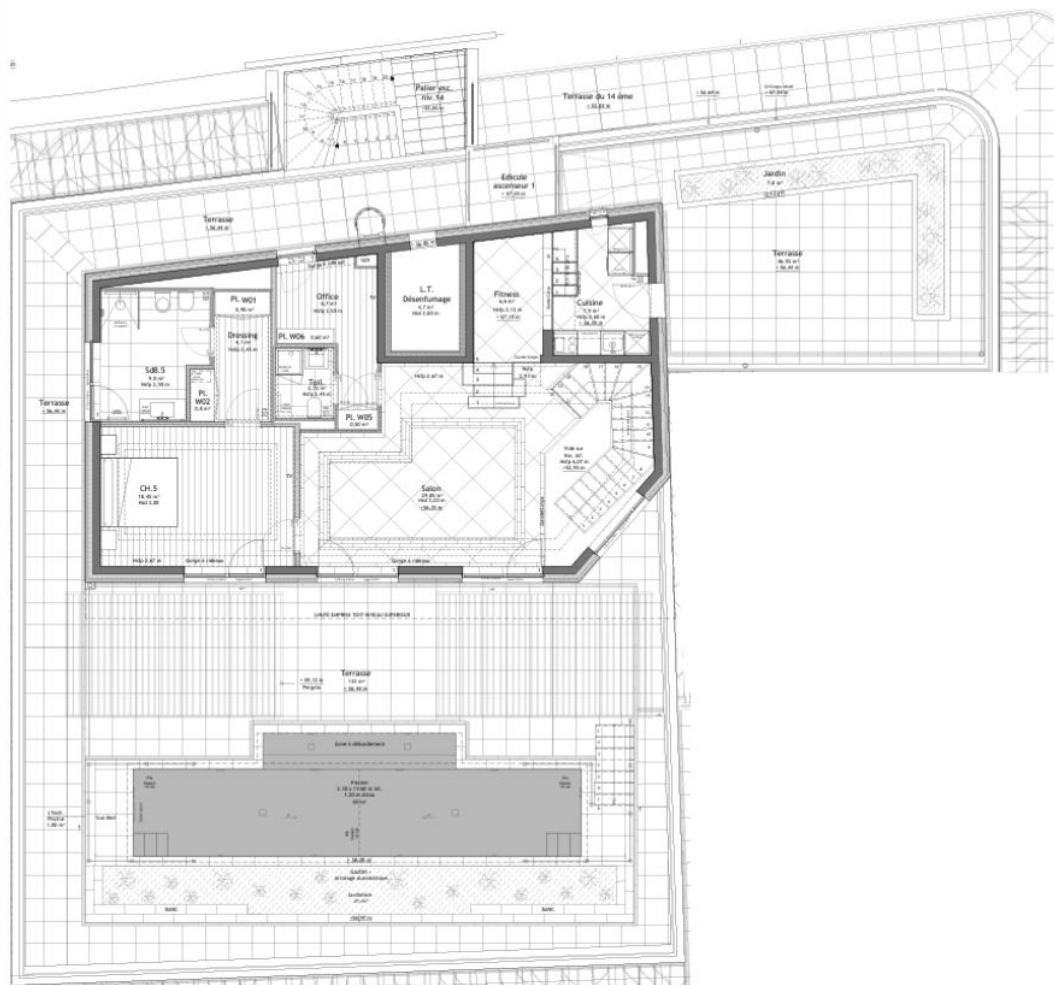


14th Floor



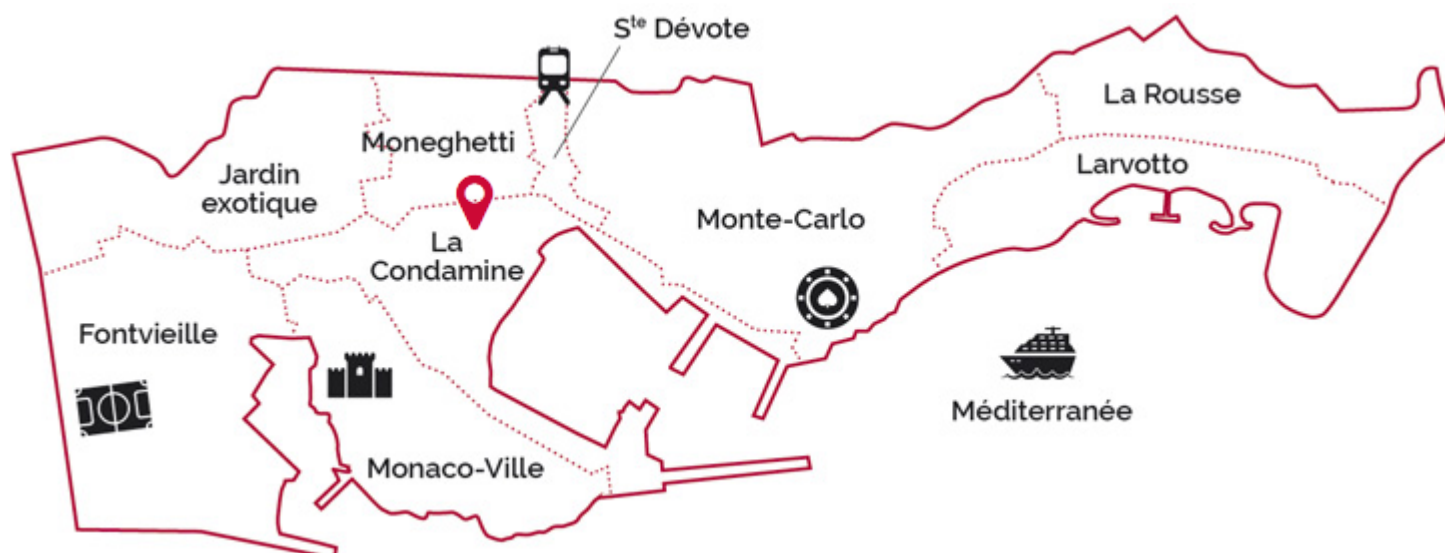


15th Floor



LE 45G

LA CONDAMINE



legal This document does not form part of any offer or contract. All measurements, areas and distances are approximate. The information and plans contained herein are believed to be correct, however, their accuracy is not guaranteed. The photographs show only certain parts of the property at the time they were taken. This offer is subject to change of price or other conditions, without prior notice.