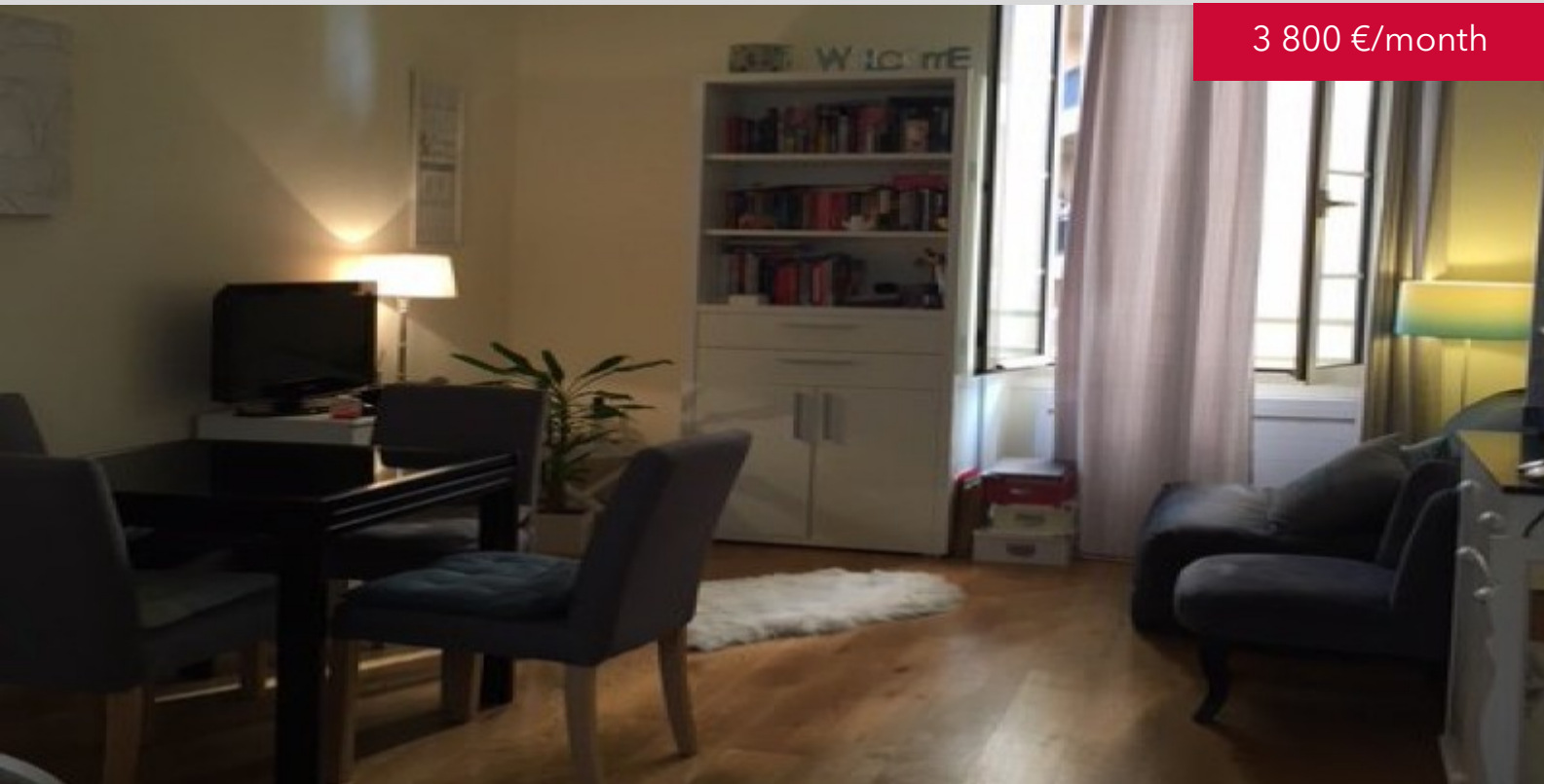


VILLA ANNA
MONTE-CARLO



2 - ? ? ? ? ? ? ? ? ? ? ? ? ? ? ? ? - ? ? ? ? ? ? ? ? ? ? - ? ? ? ? ? ? - ? ? ? ? ? ?

3 800 €/month



DESCRIPTIVE :

2-? ?????????? ??????????, ?????????????????? ? ????????????? ?????????????? ?????
 ?????????? ?? ??????. ??????? ? ??????.
 ?????????? ?????? ?????????? 38 ?2 ?????????? ?? : ??????????, ??????????, ???????
 ??????????, ?????????????????? ?????? ????????????? ??????, ?????????? ??????????
 ?????????????? ??????????.

REF: LM532

DETAILS

	*38 m²
	????????? ????????????????
	1
	Facing ??
	?????? view
CHARGES	70 €/mois

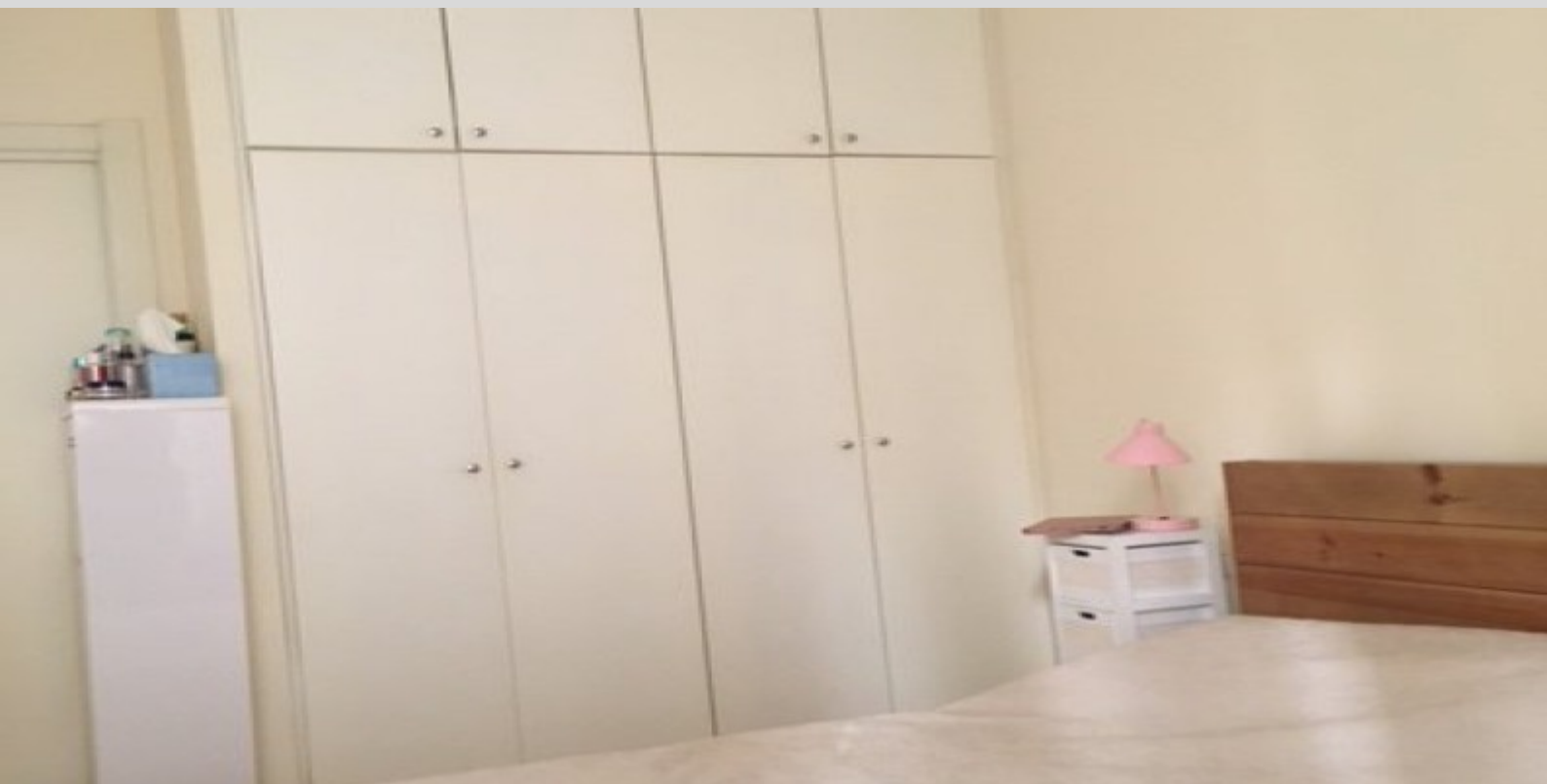
*Marketable area

This document does not form part of any offer or contract. All measurements, areas and distances are approximate. The information and plans contained herein are believed to be correct, however, their accuracy is not guaranteed. The photographs show only certain parts of the property at the time they were taken. This offer is subject to change of price or other conditions, without prior notice.

VILLA ANNA
MONTE-CARLO



2-? ???? ???? - ???? - ????-????



VILLA ANNA
MONTE-CARLO



2-? ???? ???? - ???? - ????-????

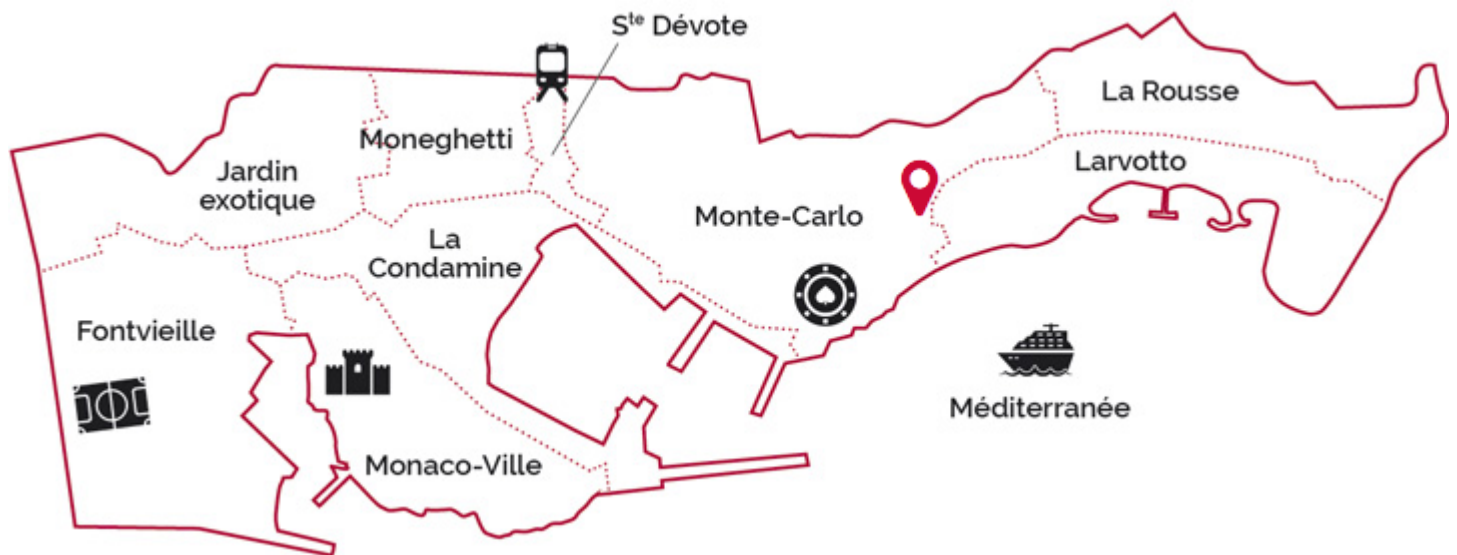


VILLA ANNA

MONTE-CARLO



2-? ???? ???? - ???? - ????-????



legal This document does not form part of any offer or contract. All measurements, areas and distances are approximate. The information and plans contained herein are believed to be correct, however, their accuracy is not guaranteed. The photographs show only certain parts of the property at the time they were taken. This offer is subject to change of price or other conditions, without prior notice.