



REF: VM2054 - 330 m² - 80 m² - 4 bedrooms - Facing SE - 3000 view



DESCRIPTIVE :

Studio Hinton, 330 m², 80 m², 4 bedrooms, Facing SE, 3000 view. Located in the heart of the Caravelles Port, this property offers a unique living space with a large terrace overlooking the sea. The property is located in the heart of the Caravelles Port, a beautiful harbor filled with yachts and boats. The property is a modern studio with a large terrace overlooking the sea. The terrace is 80 m² and offers a panoramic view of the harbor and the surrounding buildings. The property has 4 bedrooms and is located in a quiet area. The property is a studio with a large terrace overlooking the sea. The terrace is 80 m² and offers a panoramic view of the harbor and the surrounding buildings. The property has 4 bedrooms and is located in a quiet area. The property is a studio with a large terrace overlooking the sea. The terrace is 80 m² and offers a panoramic view of the harbor and the surrounding buildings. The property has 4 bedrooms and is located in a quiet area.

REF: VM2054

DETAILS

	*330 m²
	80 m²
	4 bedrooms
	4
	Facing SE
	3000 view

*Marketable area

This document does not form part of any offer or contract. All measurements, areas and distances are approximate. The information and plans contained herein are believed to be correct, however, their accuracy is not guaranteed. The photographs show only certain parts of the property at the time they were taken. This offer is subject to change of price or other conditions, without prior notice.

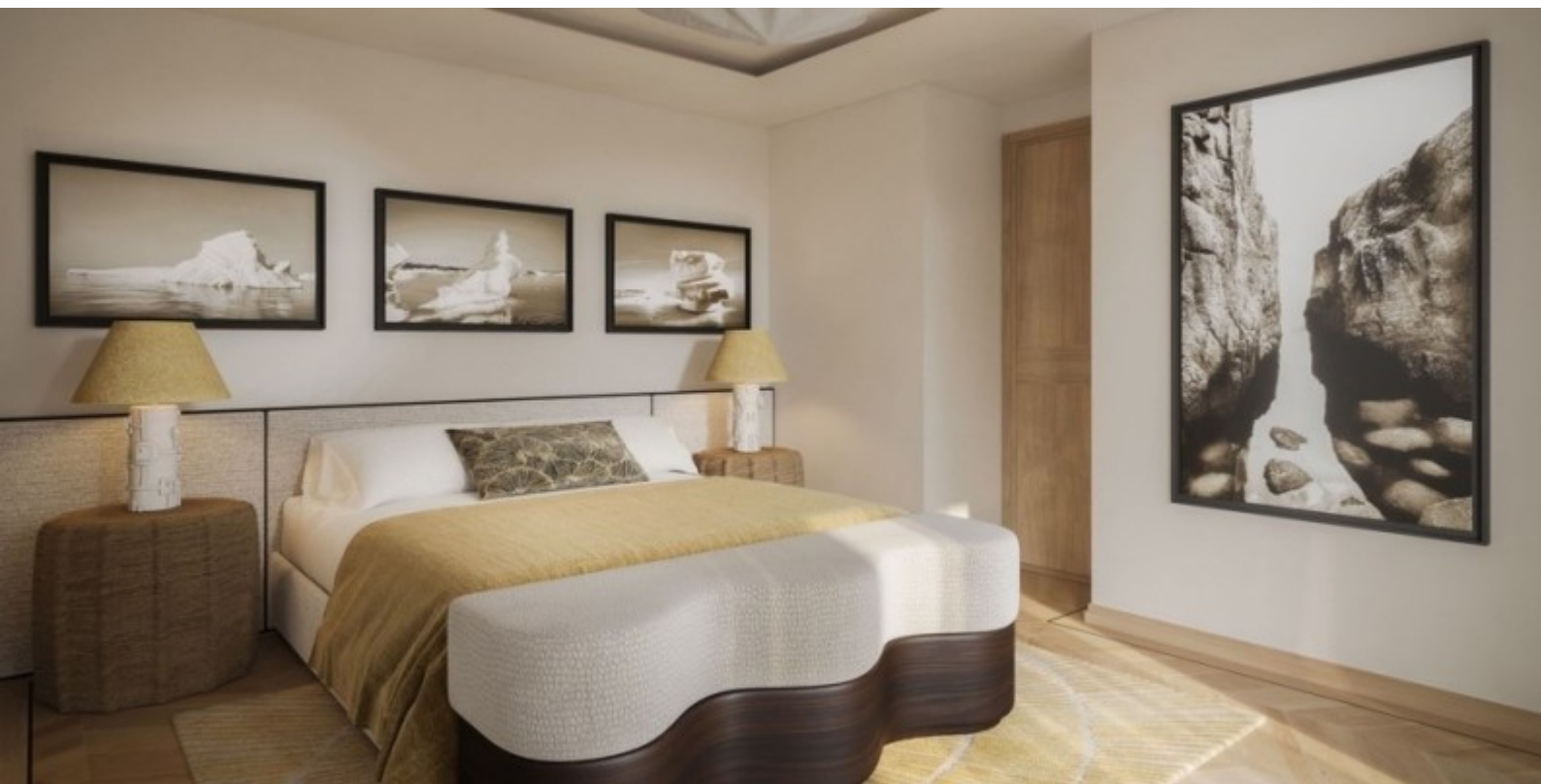


???????????????????? ?????????????? ? ????????? ? ? ?????? ??????????????





???????????????????? ???? ????? ? ???? ? ? ???? ???? ?????





???????????????????? ???? ? ???? ? ???? ?



CARAVELLES

PORT



???????????????????? ? ? ? ? ? ? ? ? ? ? ? ? ? ? ? ?



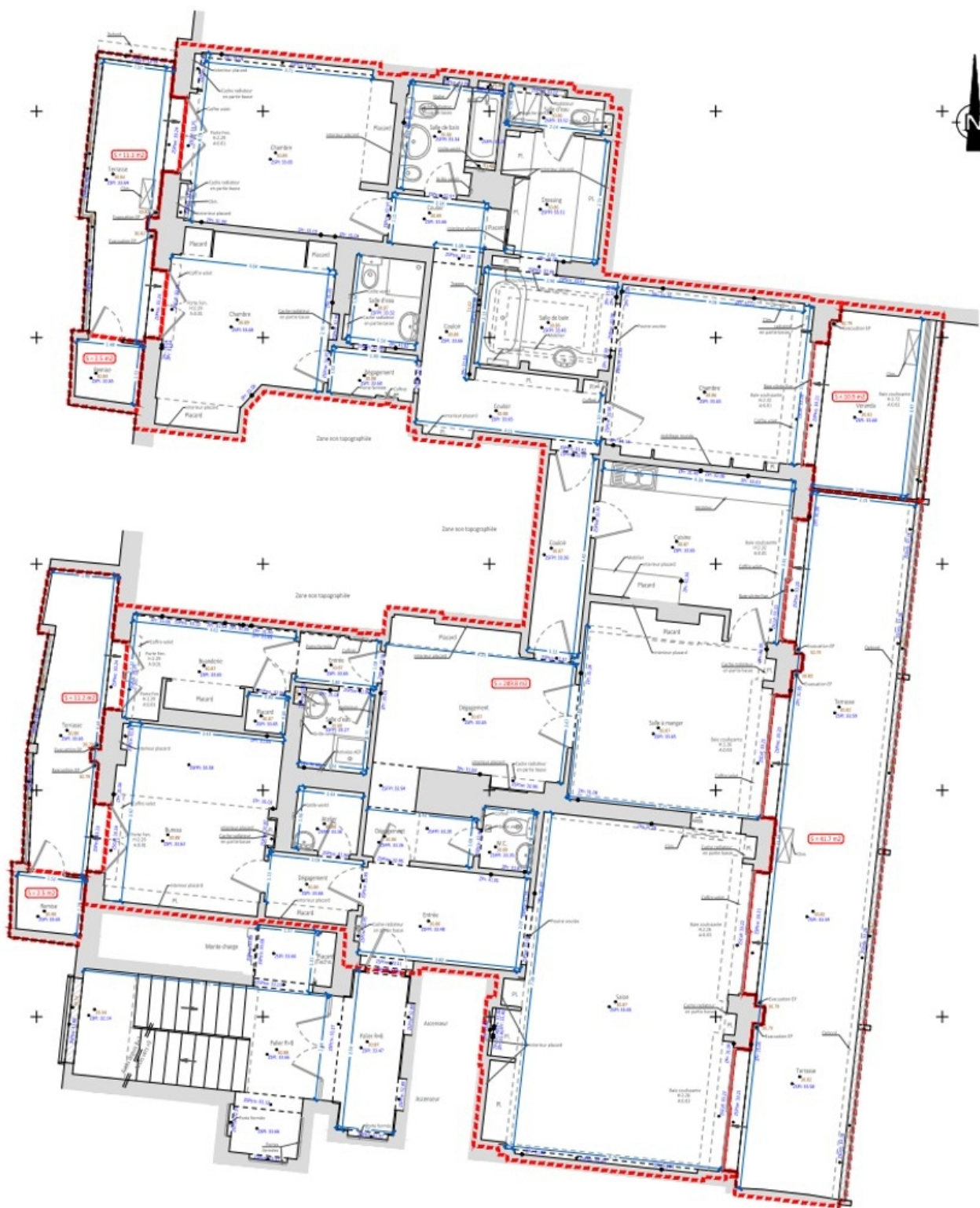
Dotta.
MONACO PRIVATE REAL ESTATE

www.dotta.mc
+377 97 98 20 00 - info@dotta.mc
5 bis avenue Princesse Alice - BP 98005 - Monaco Cedex

CARAVELLES PORT

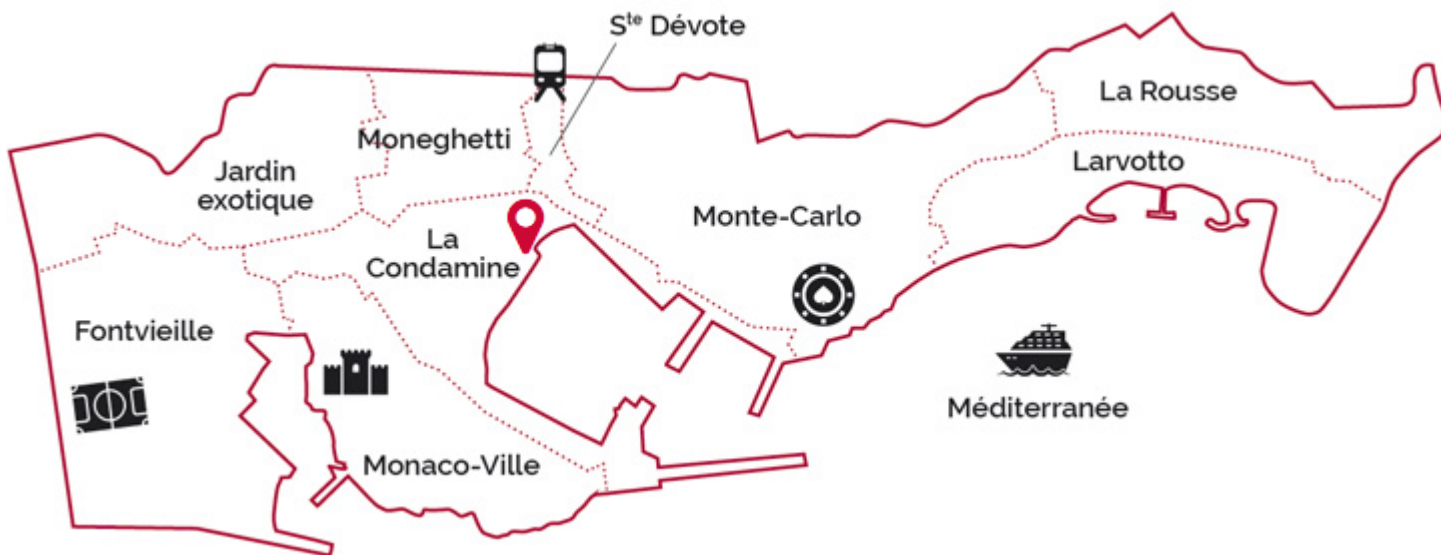


???????????????? ???? ???? ???? ???? ???? ???? ???? ?





???????????????????? ?????????????? ? ????????? ?? ????????? ??????????????



legal This document does not form part of any offer or contract. All measurements, areas and distances are approximate. The information and plans contained herein are believed to be correct, however, their accuracy is not guaranteed. The photographs show only certain parts of the property at the time they were taken. This offer is subject to change of price or other conditions, without prior notice.