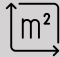









DESCRIPTIVE :

REF: VM2208

DETAILS		
		*63 m²
		10 m²
	????????????????????	
		1
		Facing ?????
		???? view

\*Marketable area

This document does not form part of any offer or contract. All measurements, areas and distances are approximate. The information and plans contained herein are believed to be correct, however, their accuracy is not guaranteed. The photographs show only certain parts of the property at the time they were taken. This offer is subject to change of price or other conditions, without prior notice.

# CHÂTEAU PERIGORD II

## LA ROUSSE



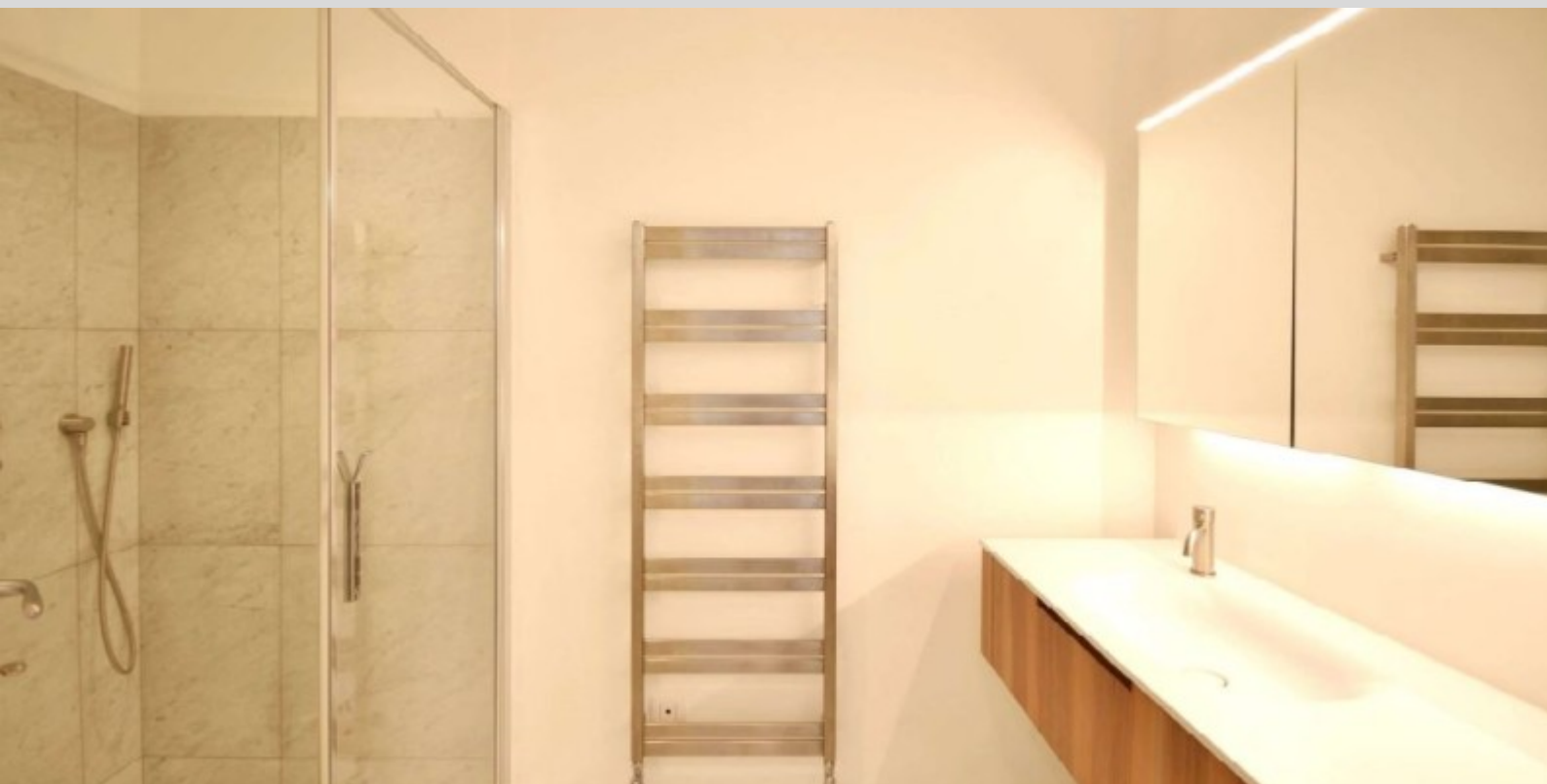
# CHÂTEAU PERIGORD II

## LA ROUSSE



# CHÂTEAU PERIGORD II

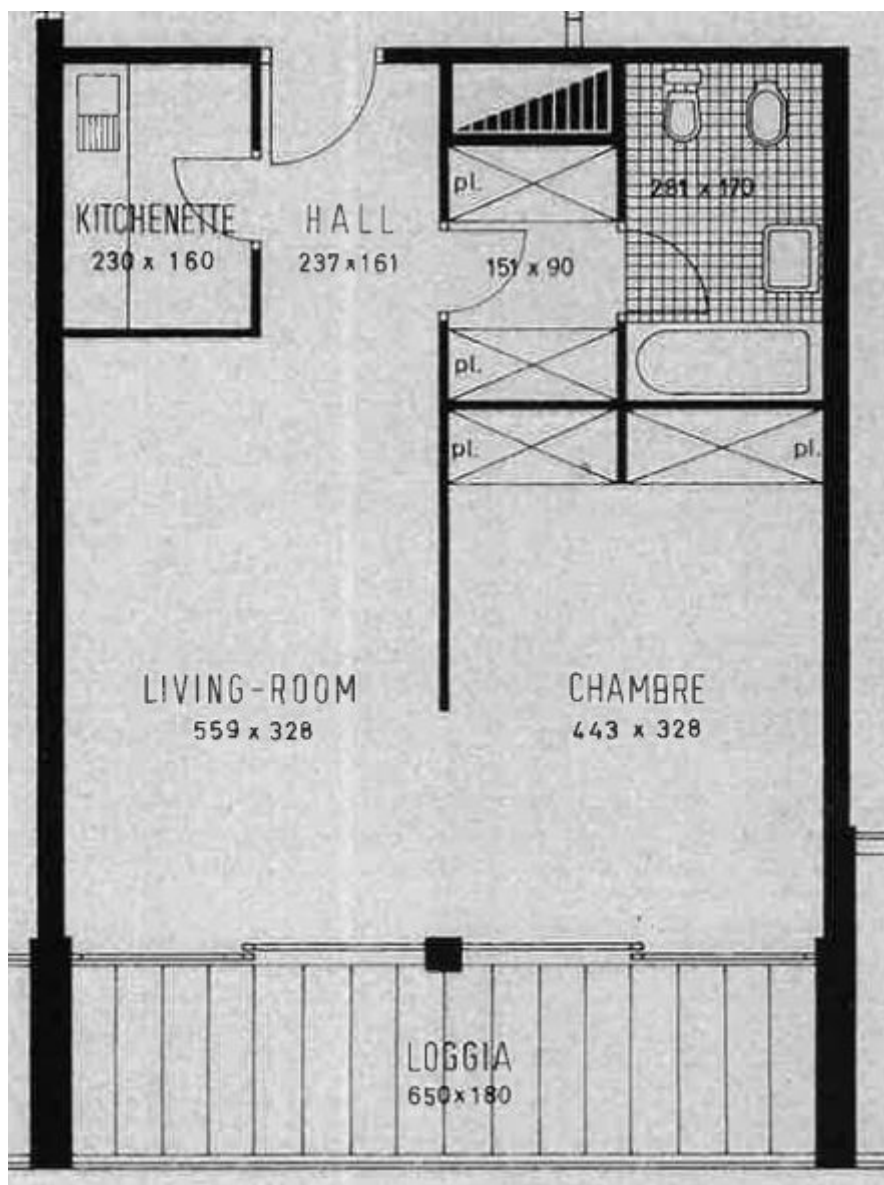
## LA ROUSSE





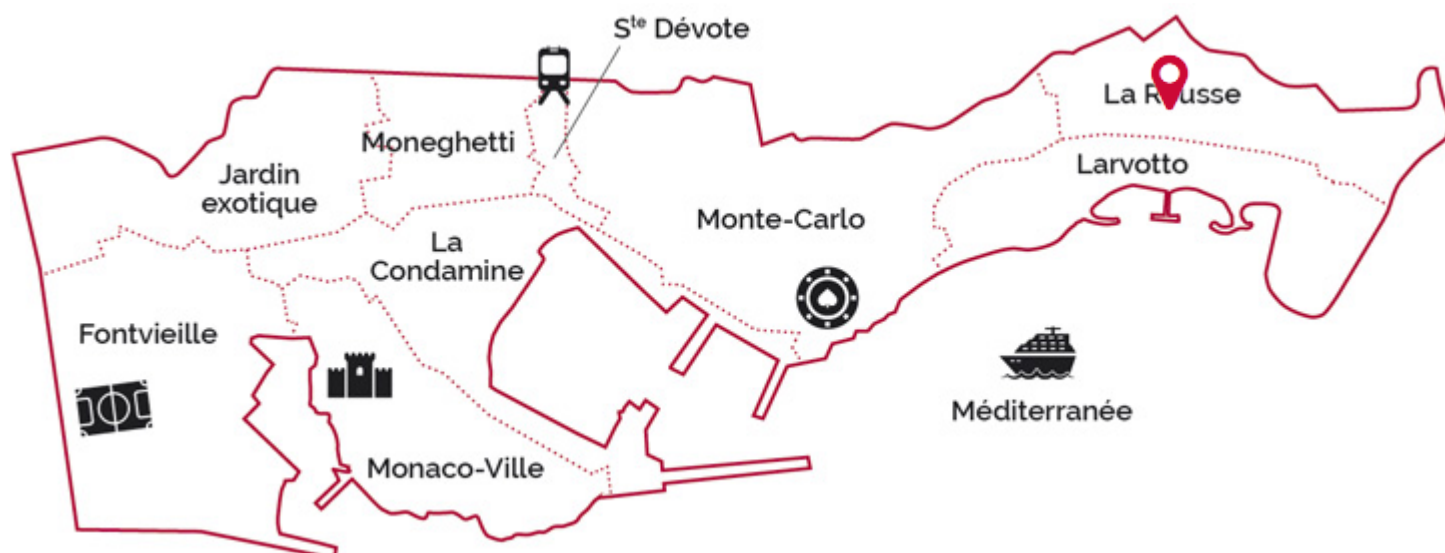
# CHÂTEAU PERIGORD II

## LA ROUSSE



# CHÂTEAU PERIGORD II

## LA ROUSSE



legal This document does not form part of any offer or contract. All measurements, areas and distances are approximate. The information and plans contained herein are believed to be correct, however, their accuracy is not guaranteed. The photographs show only certain parts of the property at the time they were taken. This offer is subject to change of price or other conditions, without prior notice.